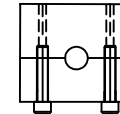
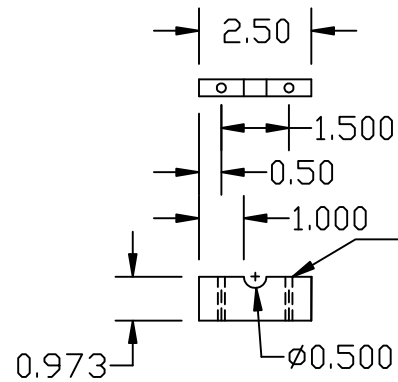


Item 01

Typ.
Mid-plane, 0.161"
Thru Holes



items 1 and 2 Assembled
Using 10-32 Type F
Thread Cutting Screws



Item 02

Typ. 0.201" Free Fit Clearance
Hole for 410 SST 10-32 x
1 1/4" Long, Hex Washer
Head Type F Thread
Cutting Screw

3/8" Aluminum 6061 or 5052

JPods LLC It Costs Less to Move Less		
Drawing ID	0001A0035	
Title/Description	Bogie Guide Wheel Plates	Rev. 1
	Drawn by: Gordon Israelson Checked by: NA	27 December 2006
Drawing Change:	NA	Sheet 1 of 1