



The Future of Moving Material More Efficiently & with Fewer Impacts

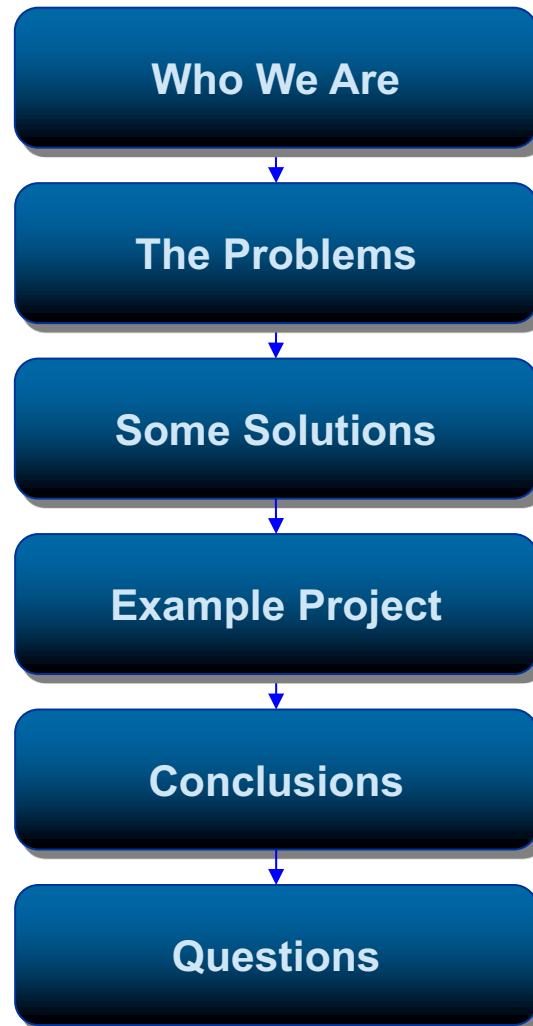
Presented at Salmonid Restoration Conference 2013

March 13, 2013

P. Travis James, P.E.,
Bill James, CEO, JPods

ptrav37@gmail.com; P: 707.443.8326
bill.james@jpods.com; P: 612.414.4211

Presentation Outline



Who We Are

Who We Are



The Problems

The Problems

Parasitic Mass

Schedule & Idle Time

Access Road Impacts

Oil Price & Dependence

The Problems: Parasitic Mass



The Problems: Schedule & Idle Time



The Problems: Construction Access Road Impacts

Through
Sensitive Areas

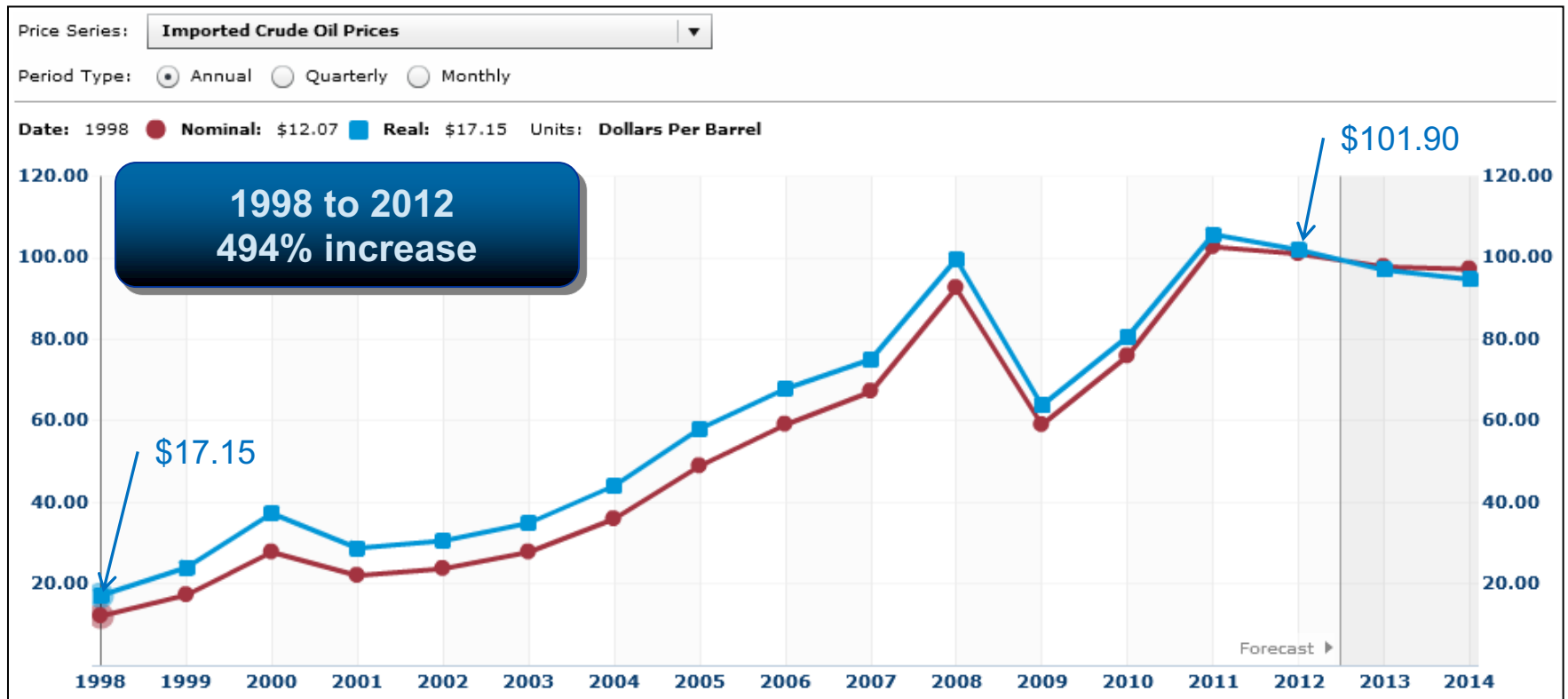
Sediment Mgmt

Dust Mgmt

Roadbed material
Import/Export



The Problems: Oil Price



Source: U.S. Energy Information Administration
(<http://www.eia.gov/forecasts/steo/realprices/>)

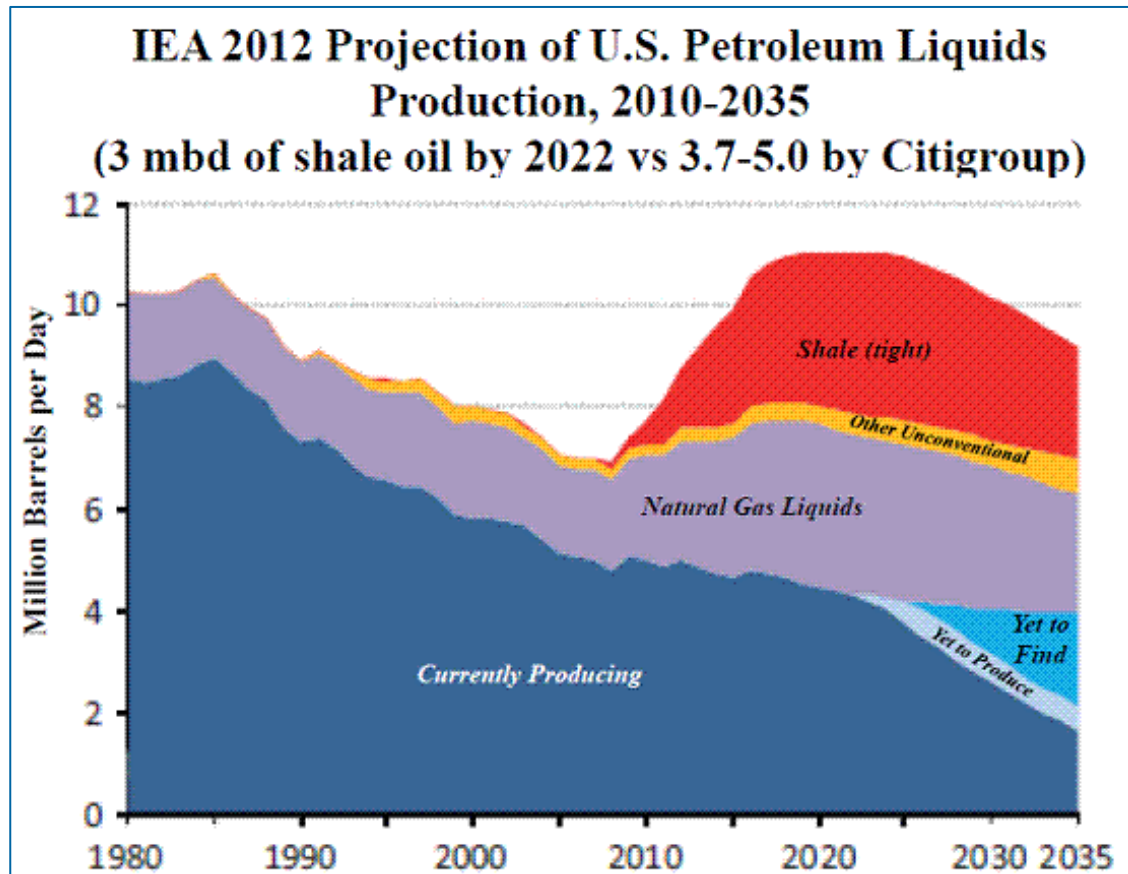
The Problems: Oil Dependency

War since 1990

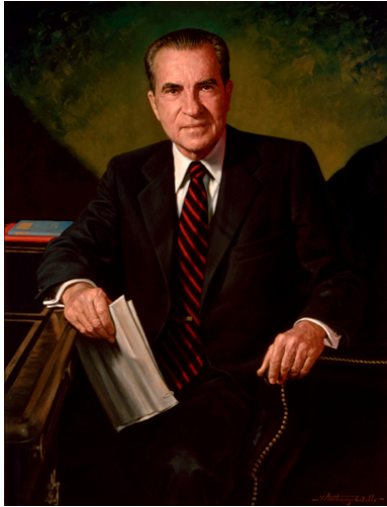
Oil is finite

U.S. uses 18.5 mbd

IEA forecast U.S. production
peak in 2020 at 11 mbd



The Problems: Oil Dependency

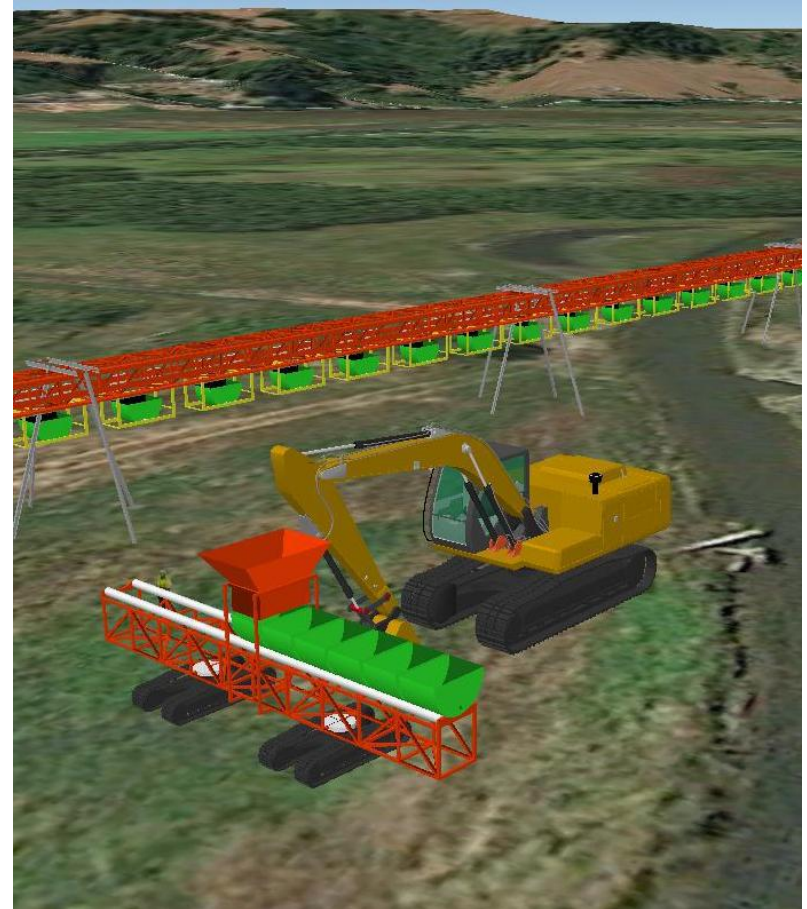


Some Solutions

Some Solutions



Conveyor Belt



DirtPod™

Some Solutions: Conveyor Belt

No parasitic mass

No schedule & idle time

Minimal access road impacts

Little oil dependence



Conveyor Belt

Some Solutions: DirtPod™

Some parasitic mass

Minimal schedule & idle time

Minimal access road impacts

Slight oil dependence



DirtPod™

Some Solutions: DirtPods™



Reapplied Technology

Replace Highly Repetitive &
Dense Traffic



Example Project

Example Project



Salmon Creek

Example Project: Salmon Creek Overview



Michael Love & Associates
Hydrologic Solutions

4,800 ft New Channel

**Off Channel Habitat
Features**

New LWD Complexes

33,400 CY Soil Moved

One Land Owner



Example Project: Salmon Creek Overview



Example Project: Salmon Creek Overview



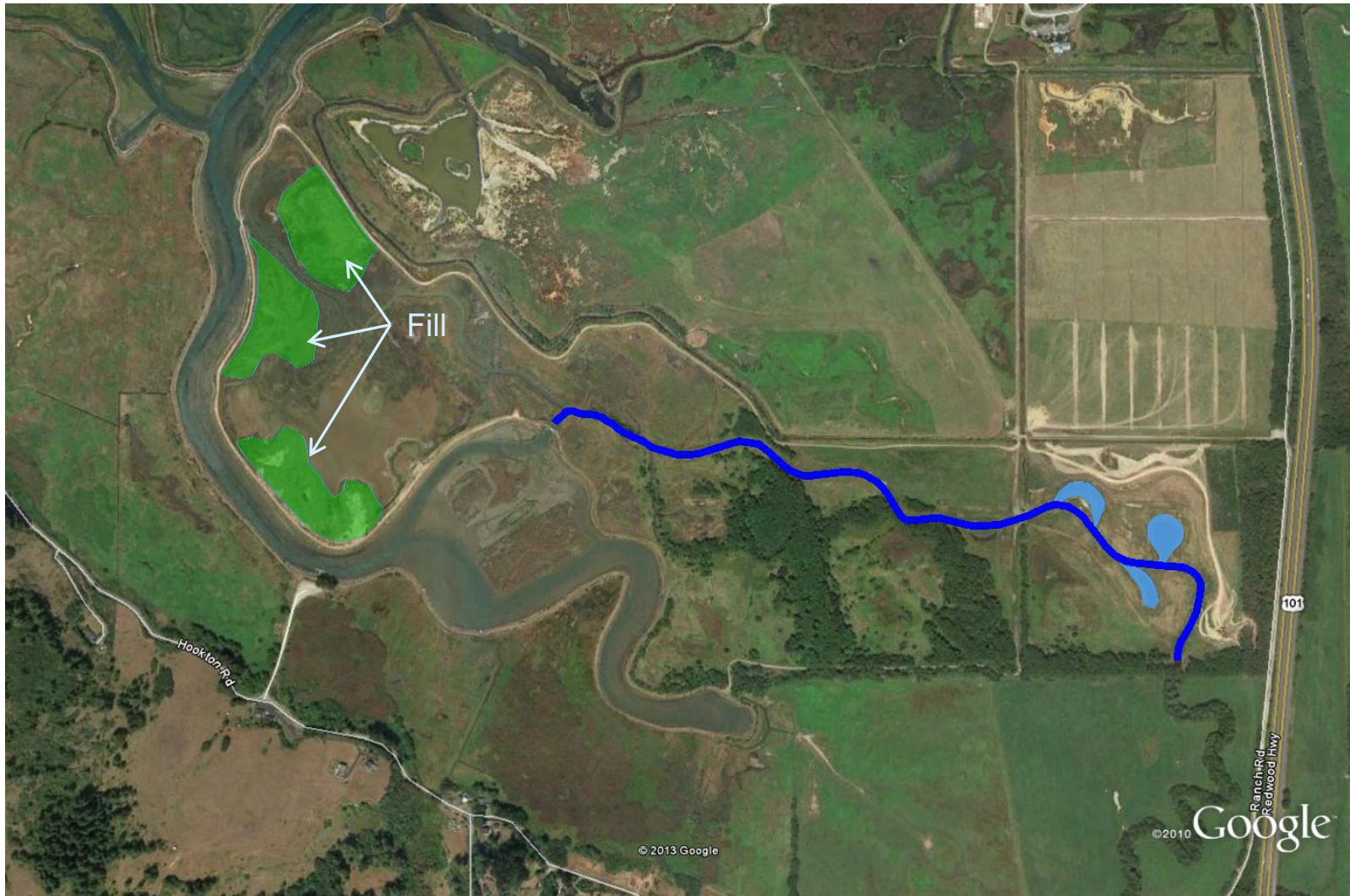
Example Project: Salmon Creek Overview



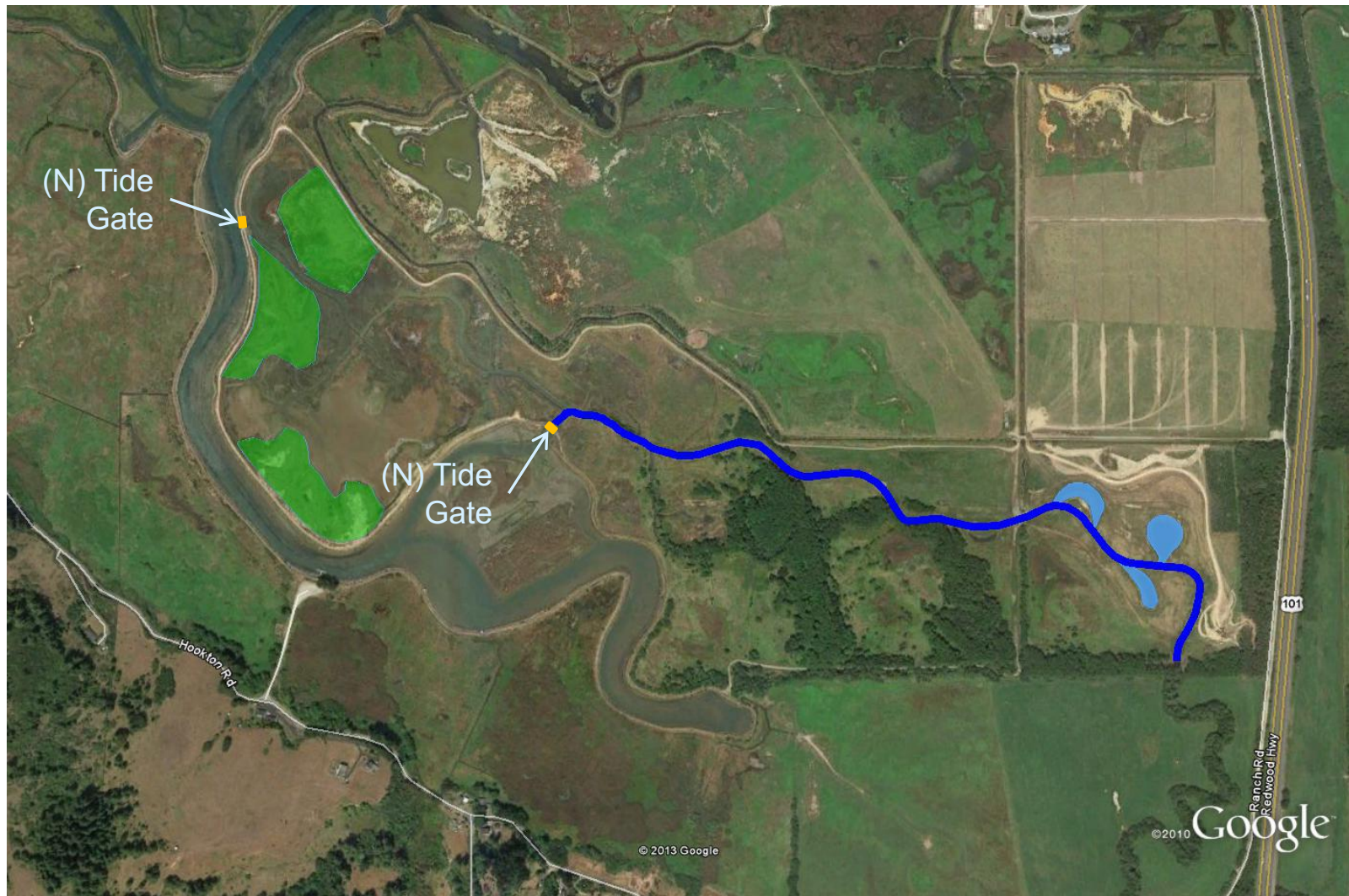
Example Project: Salmon Creek Overview



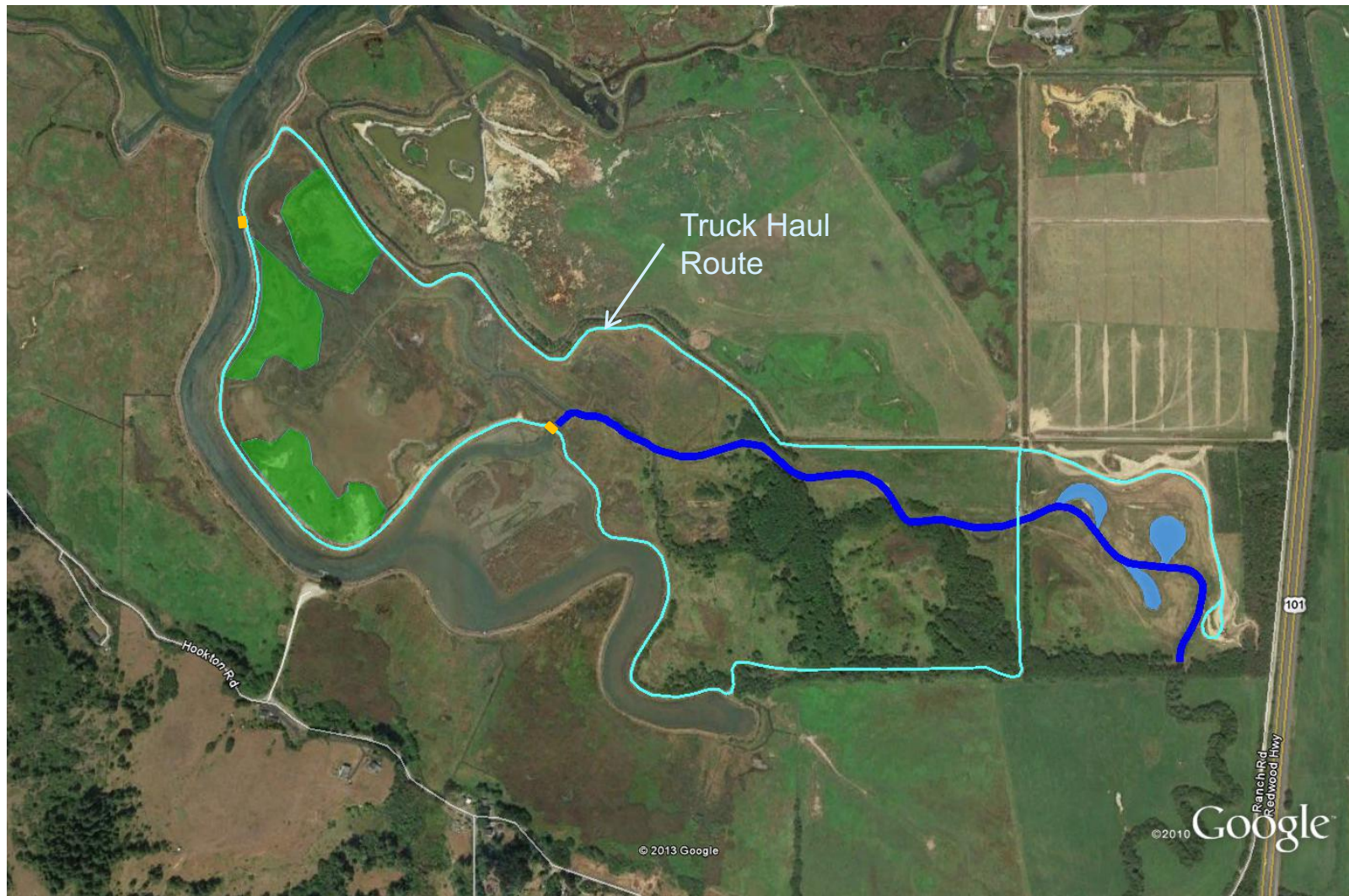
Example Project: Salmon Creek Overview



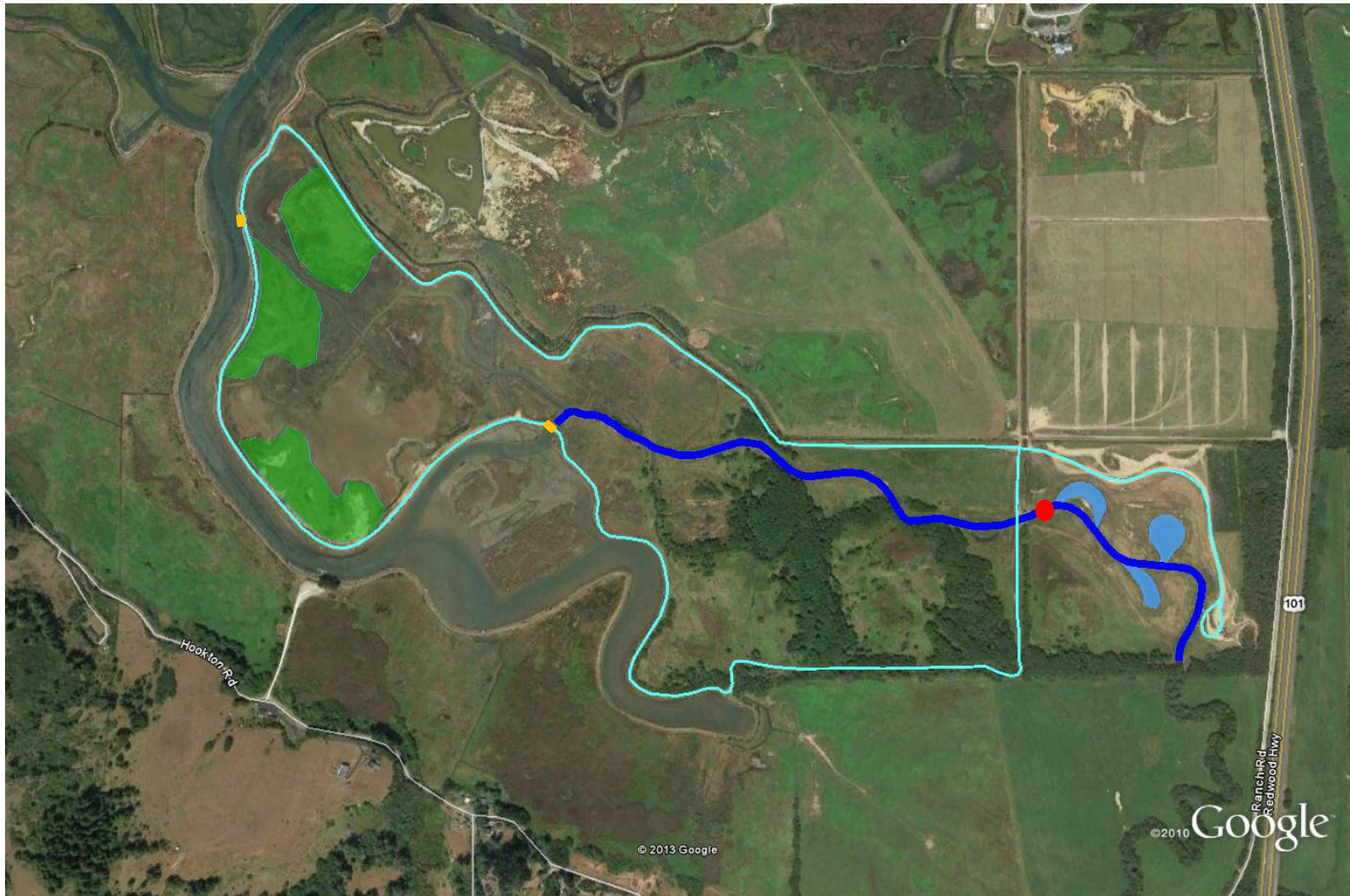
Example Project: Salmon Creek Overview



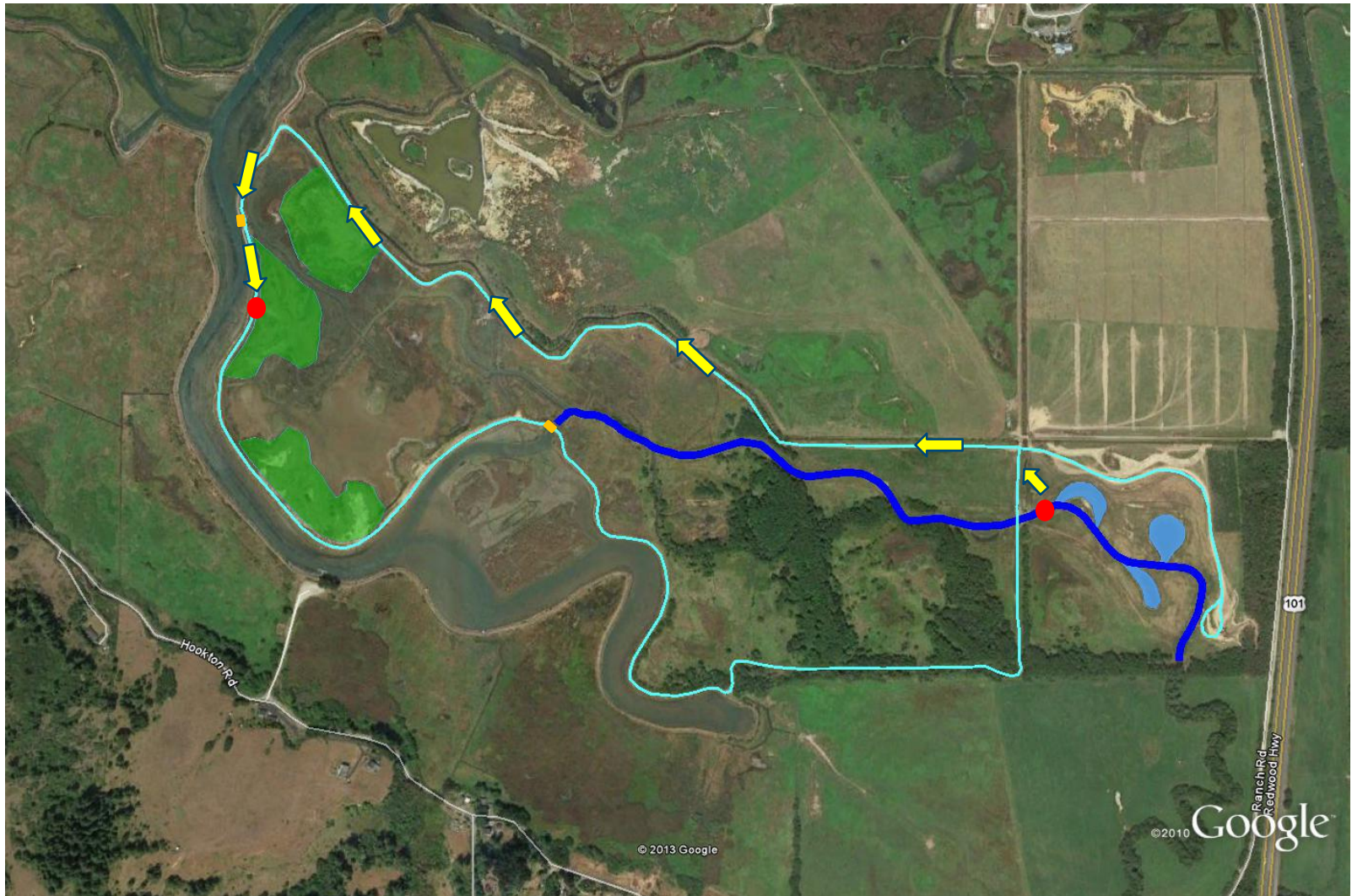
Example Project: Salmon Creek Overview



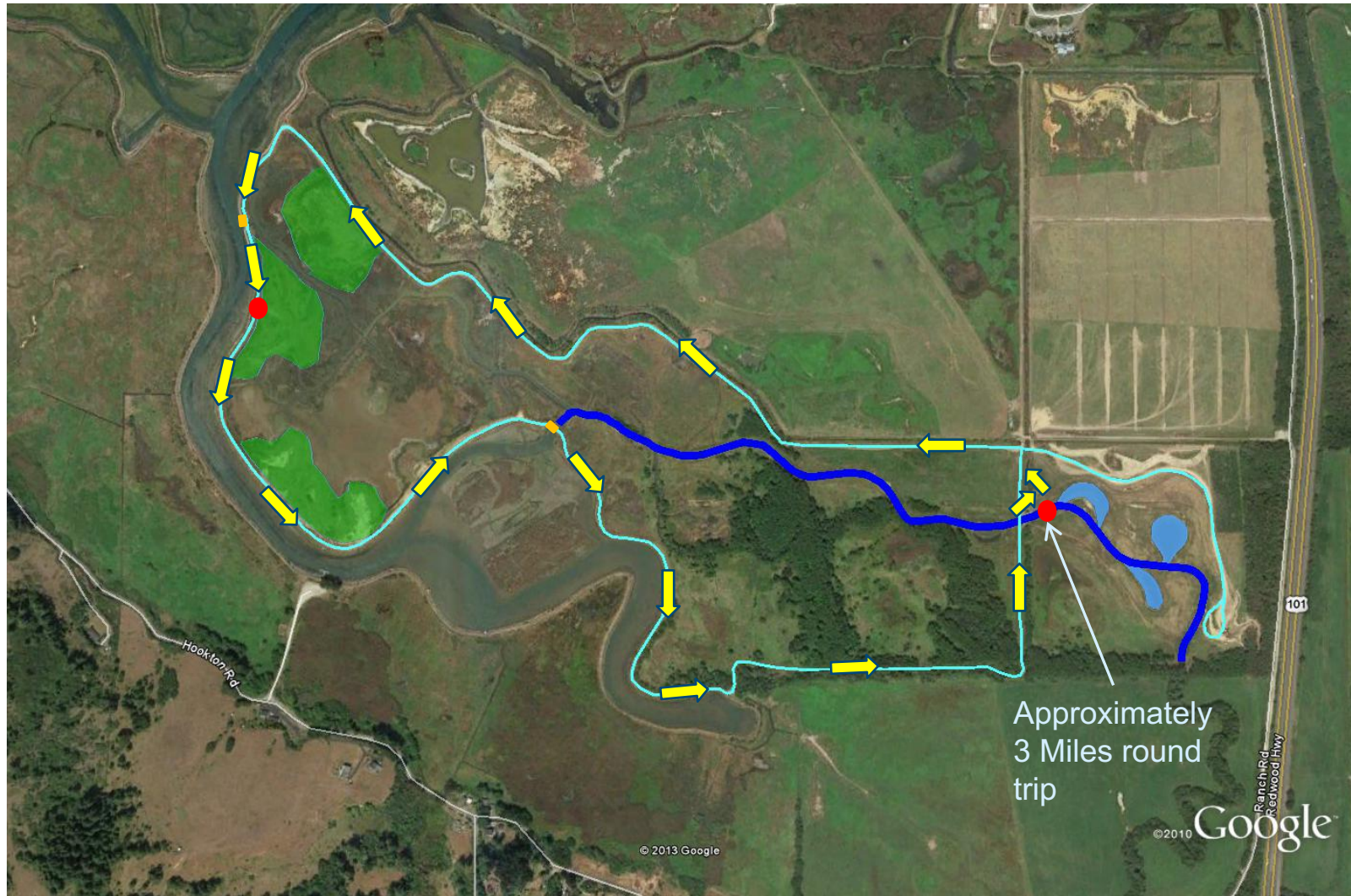
Example Project: Salmon Creek Overview



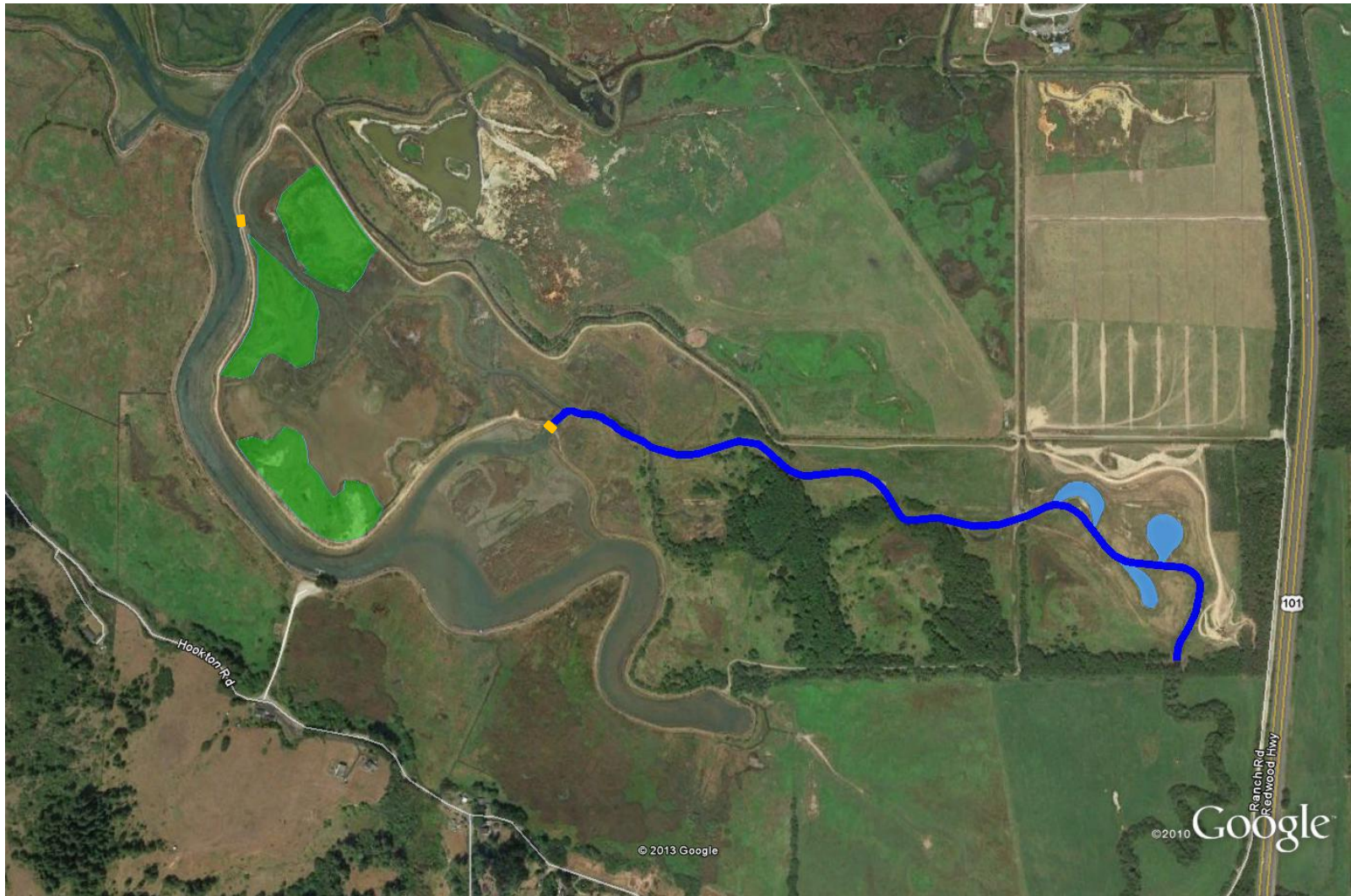
Example Project: Salmon Creek Truck Hauling



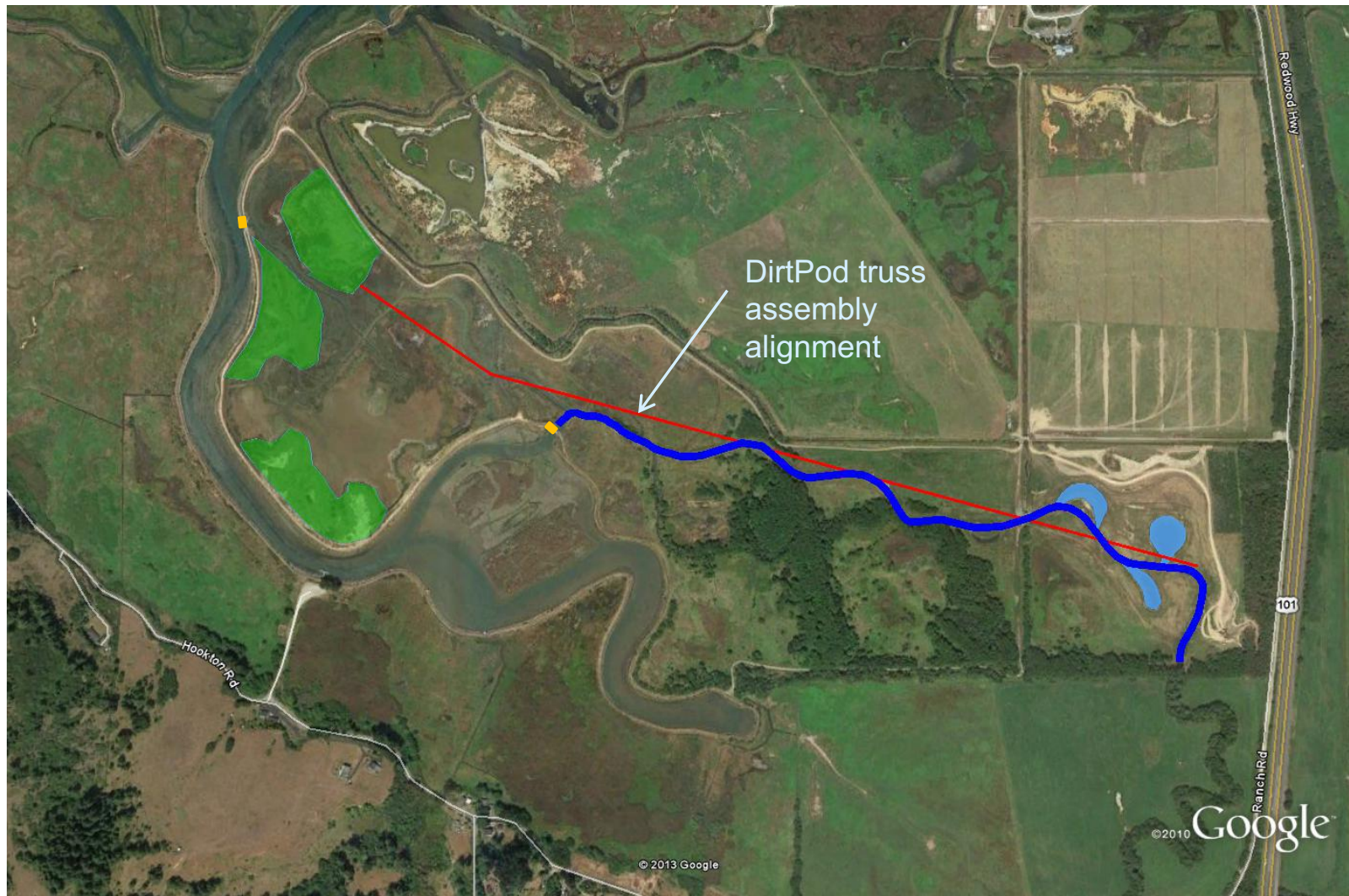
Example Project: Salmon Creek Truck Hauling



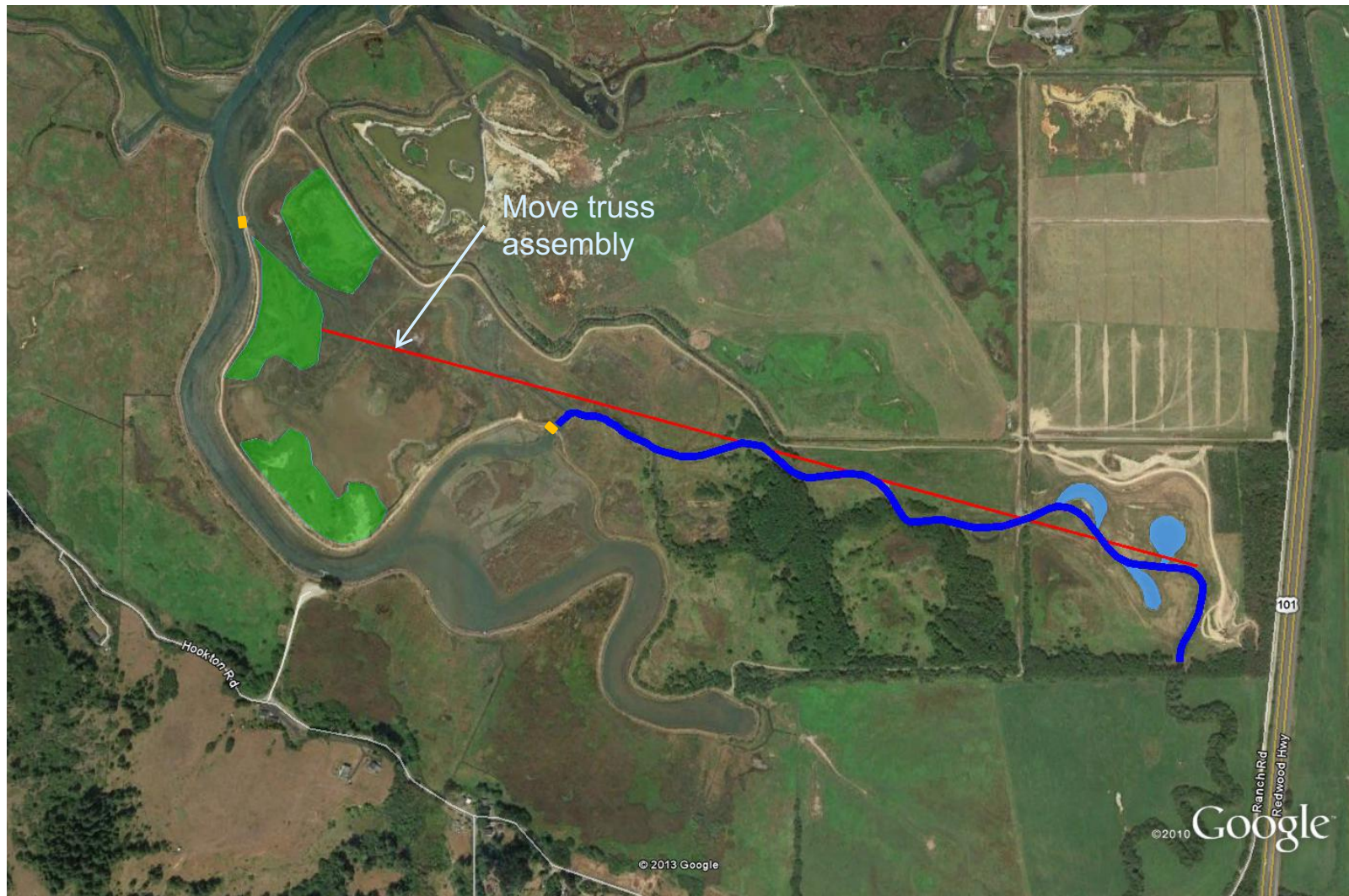
Example Project: Salmon Creek DirtPod™



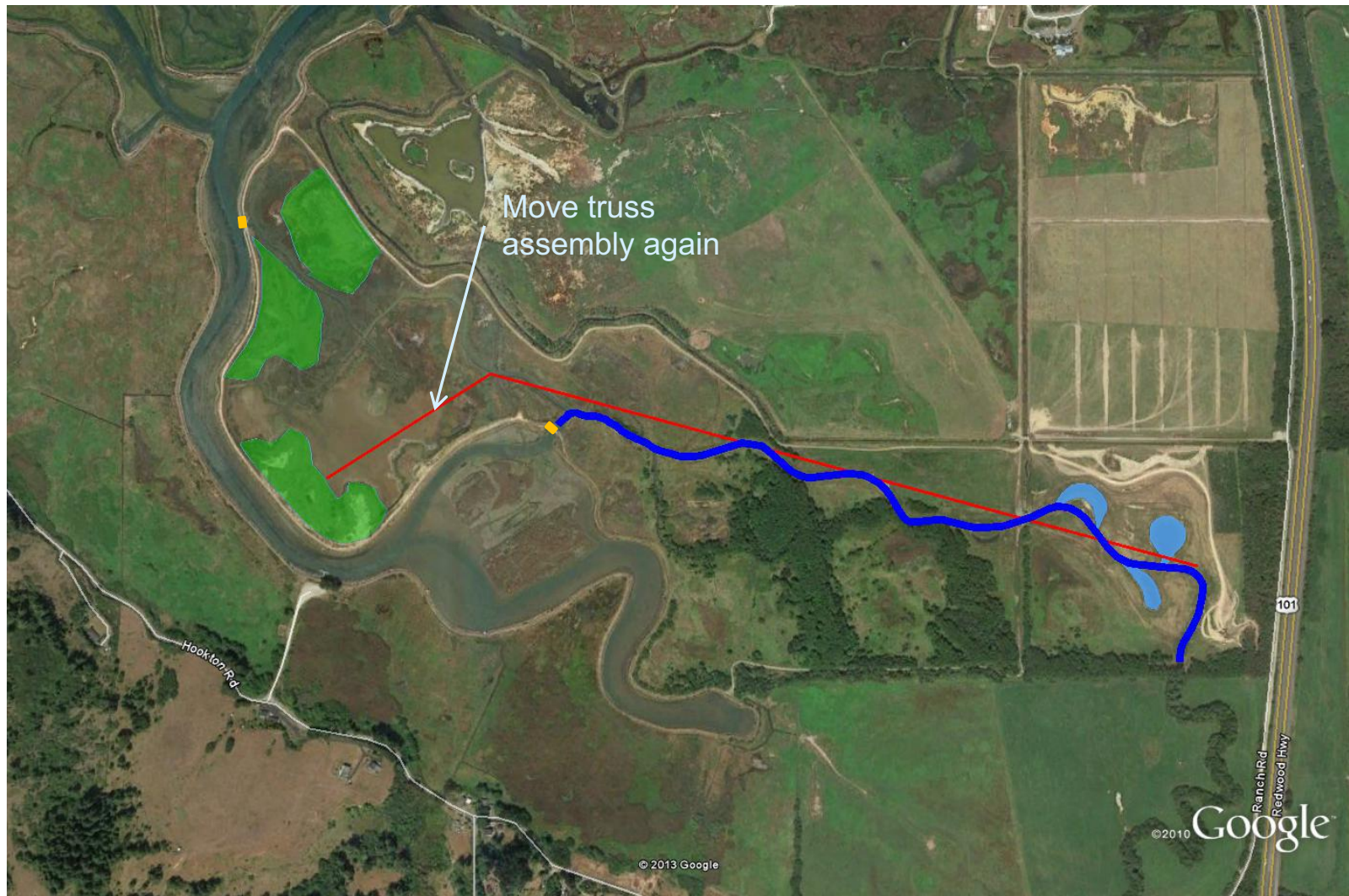
Example Project: Salmon Creek DirtPod™



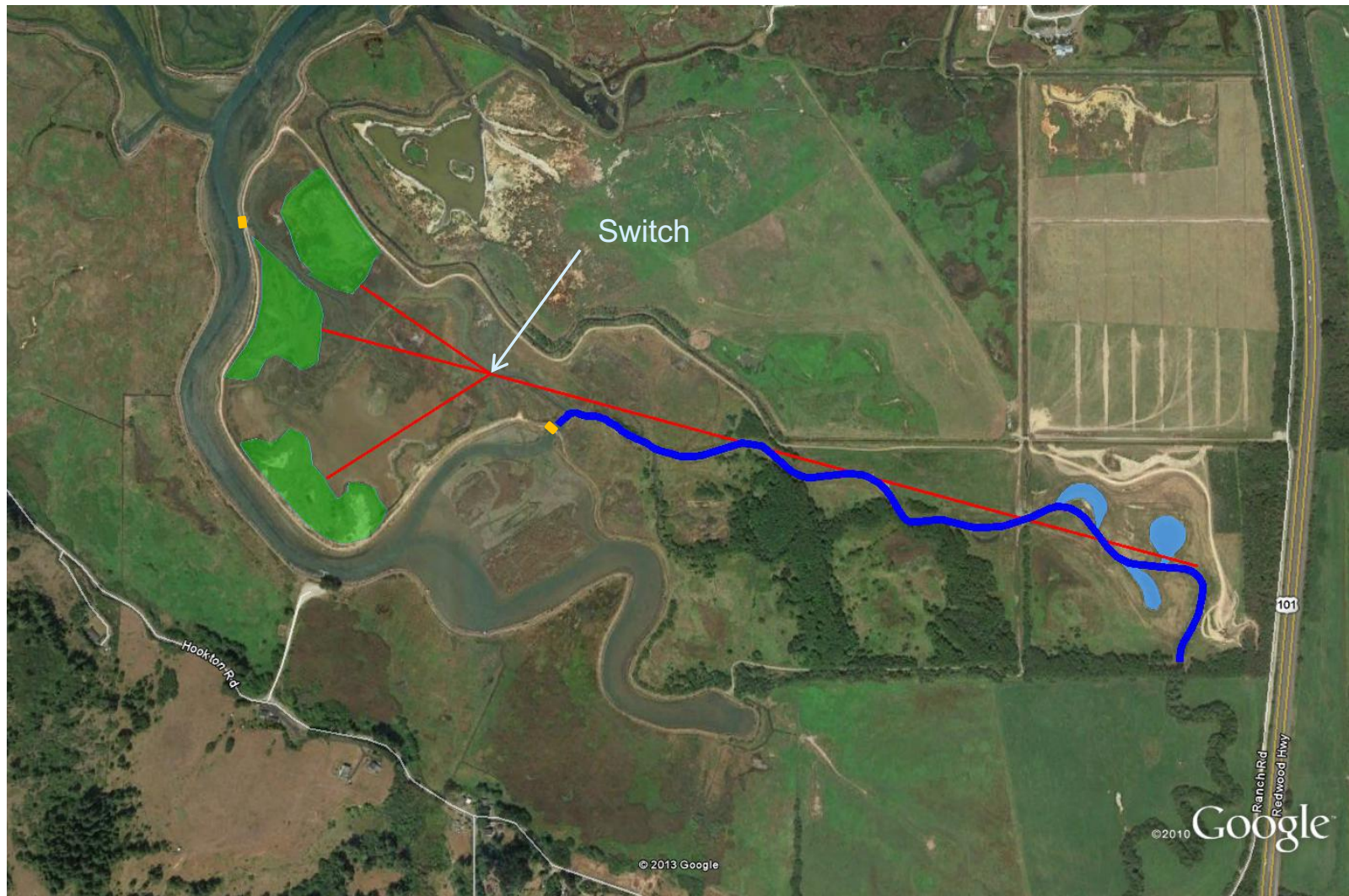
Example Project: Salmon Creek DirtPod™



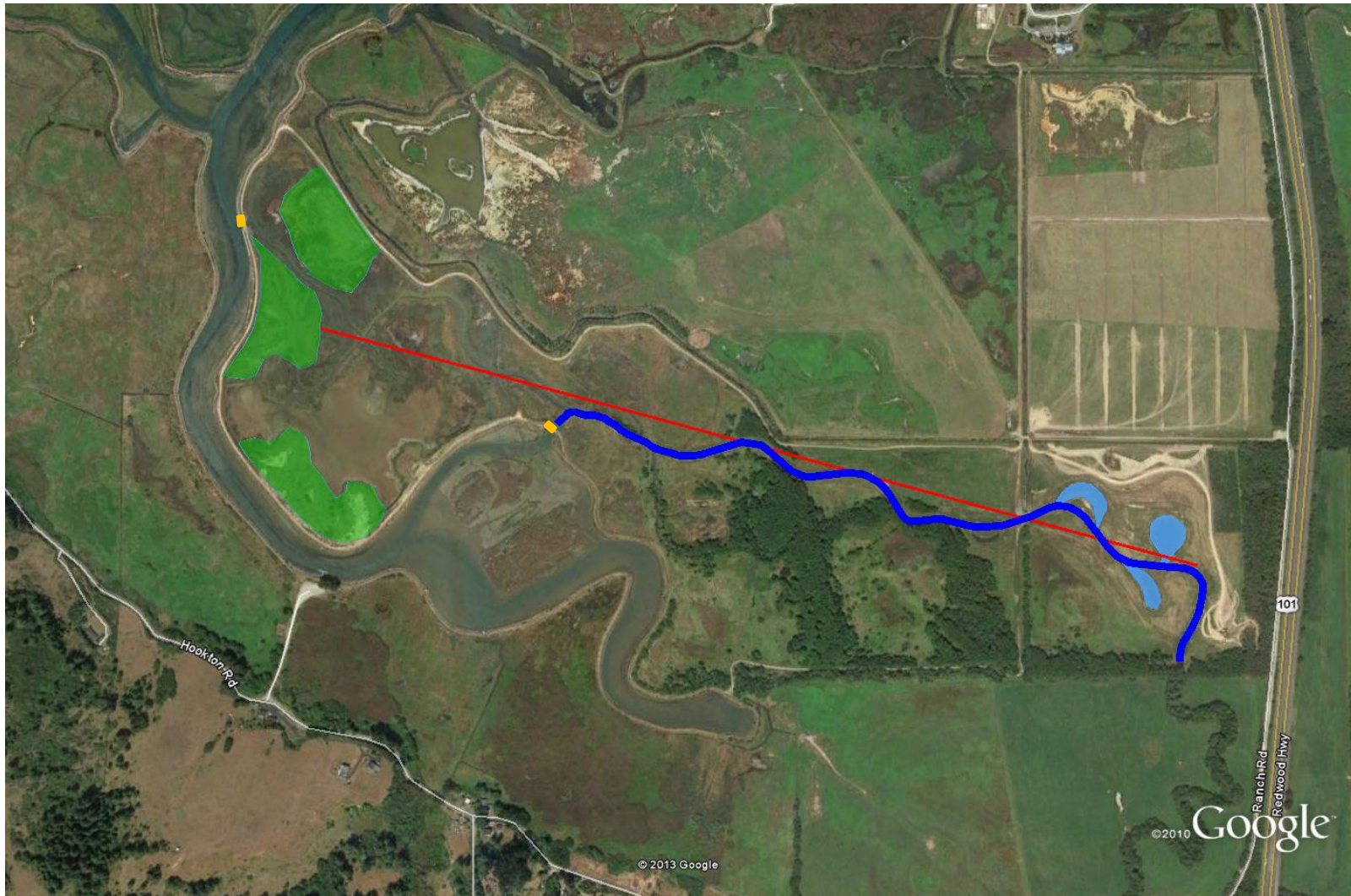
Example Project: Salmon DirtPod™



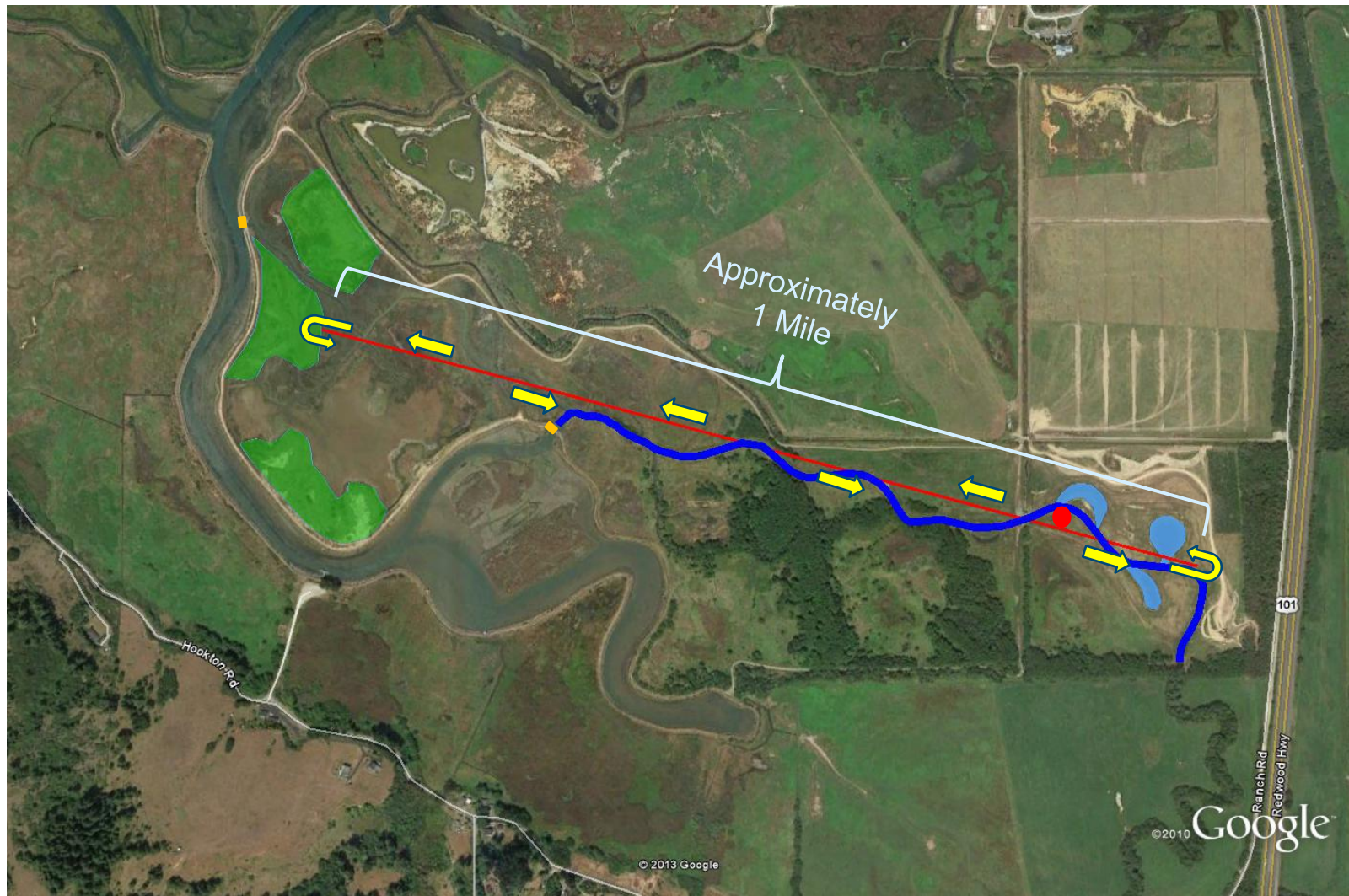
Example Project: Salmon DirtPod™



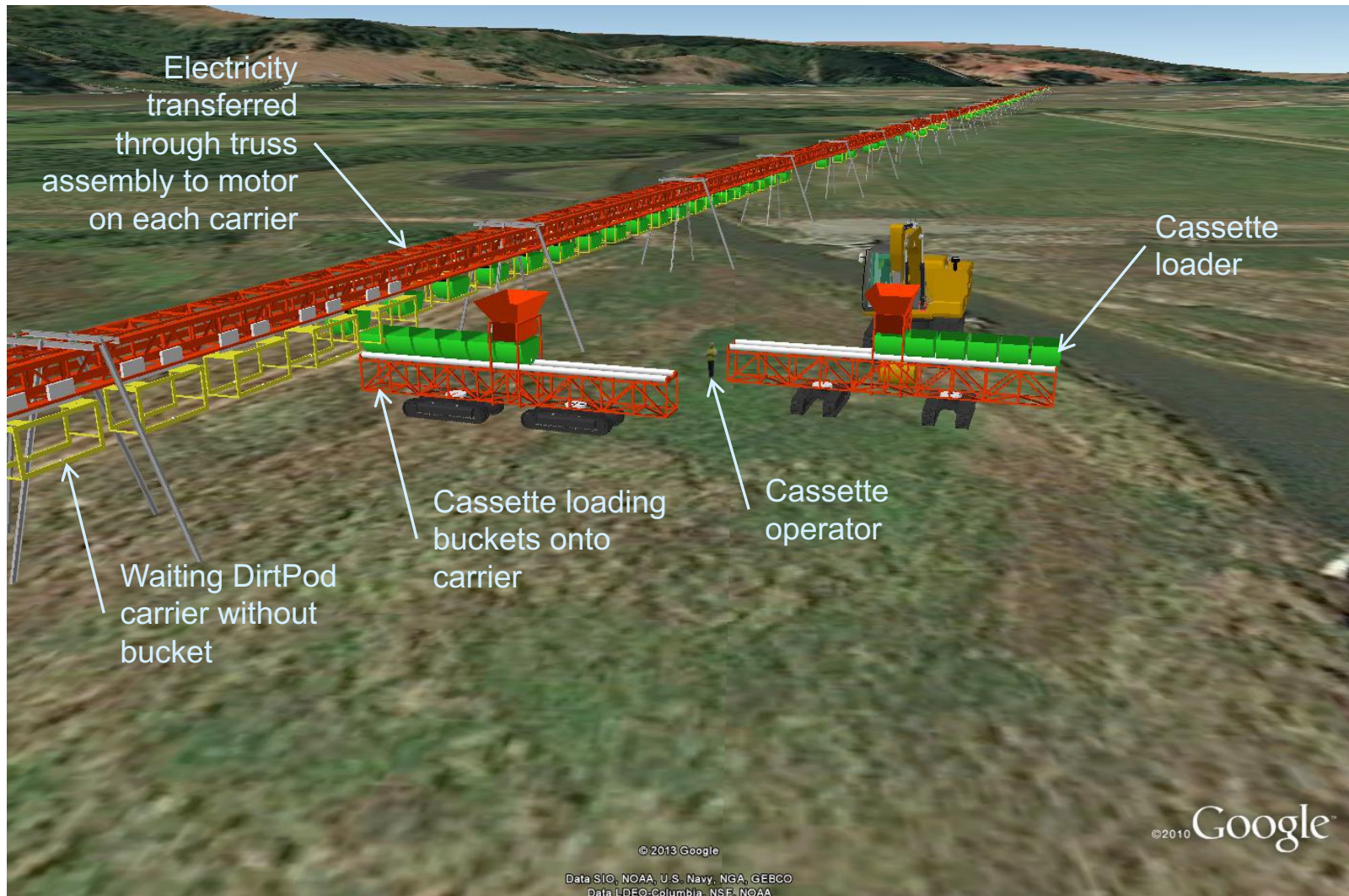
Example Project: Salmon Creek DirtPod™



Example Project: Salmon Creek DirtPod™



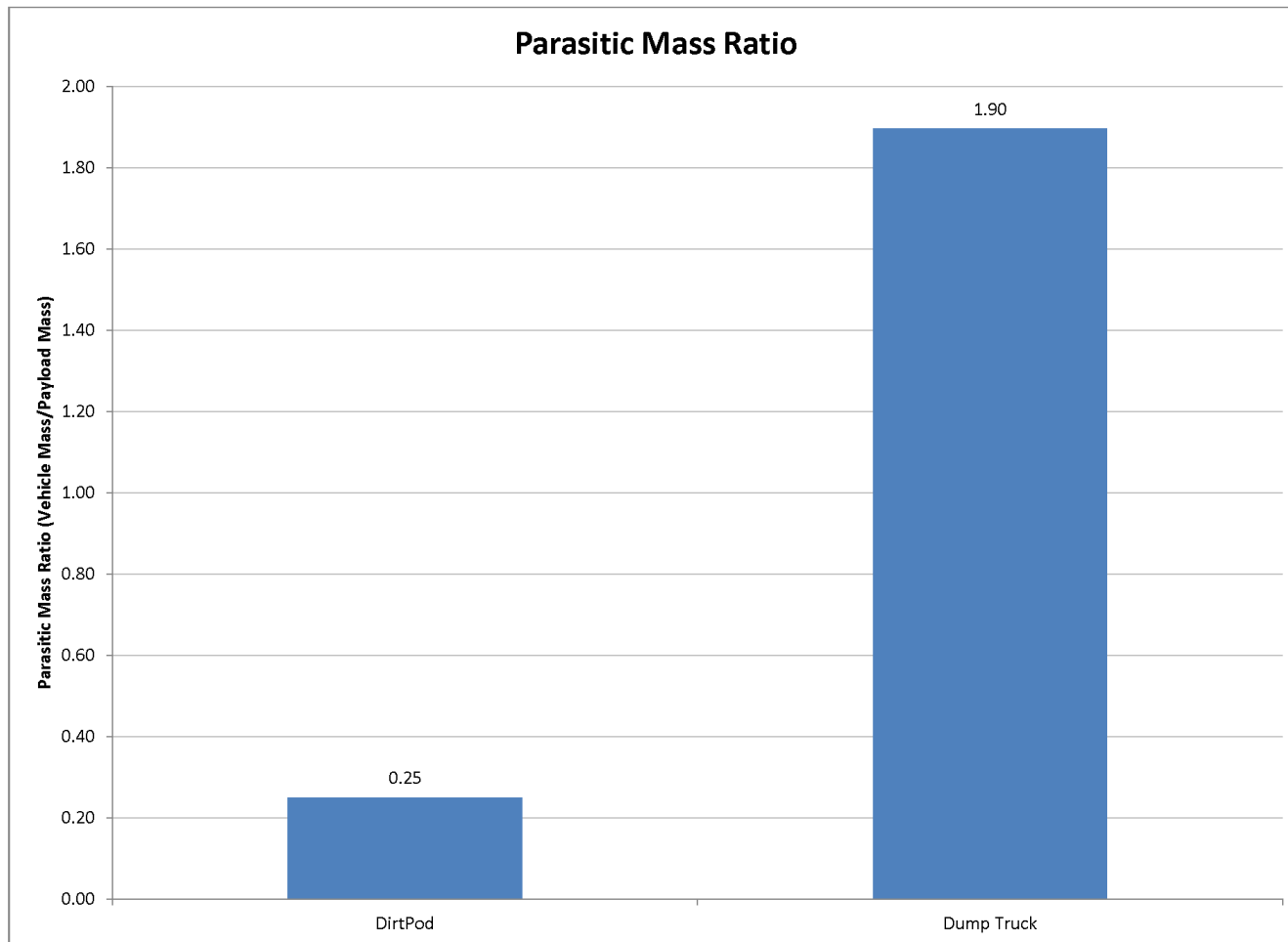
Example Project: Salmon Creek DirtPod™



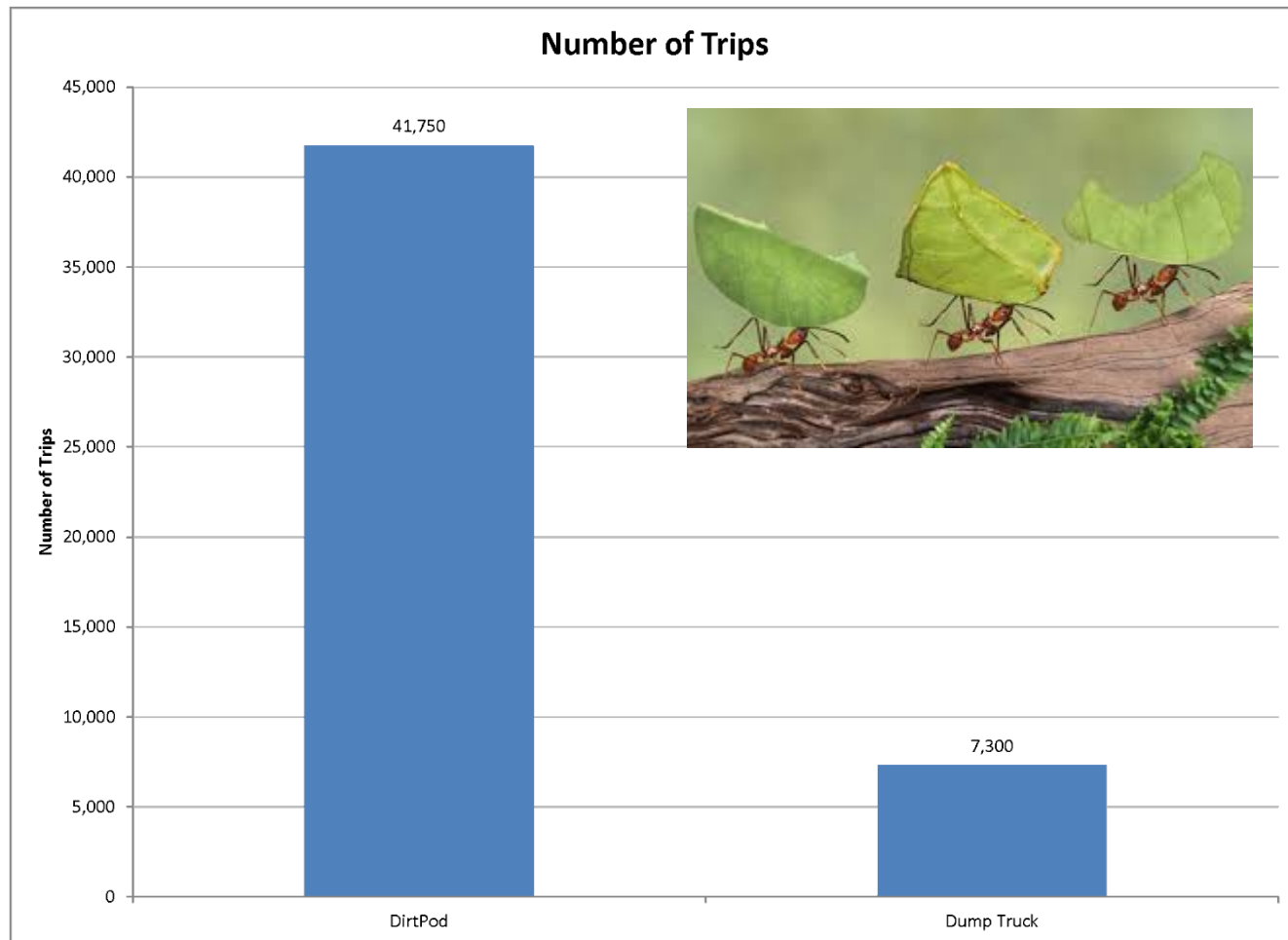
Example Project: Salmon Creek DirtPod™



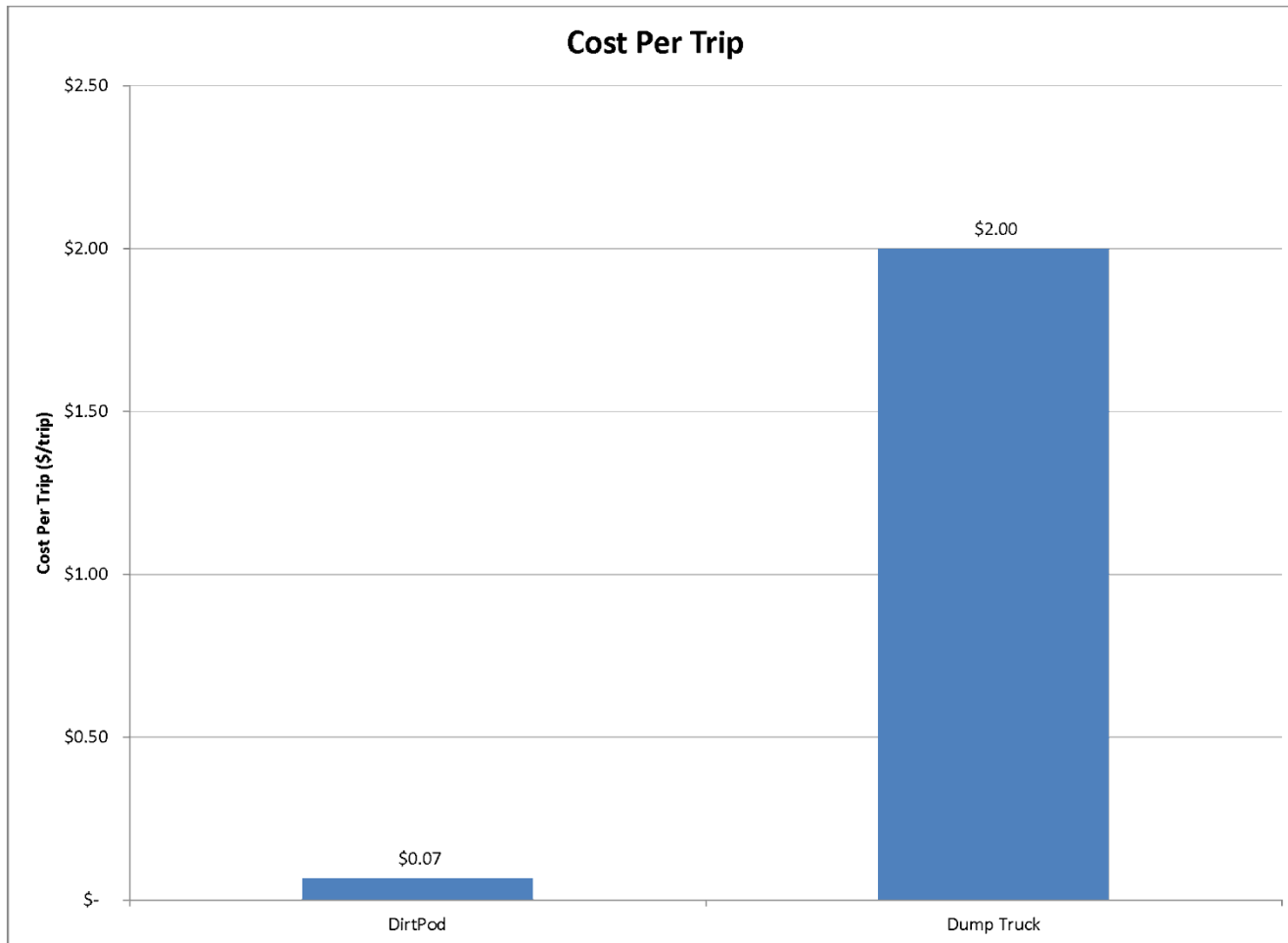
Example Project: Comparison



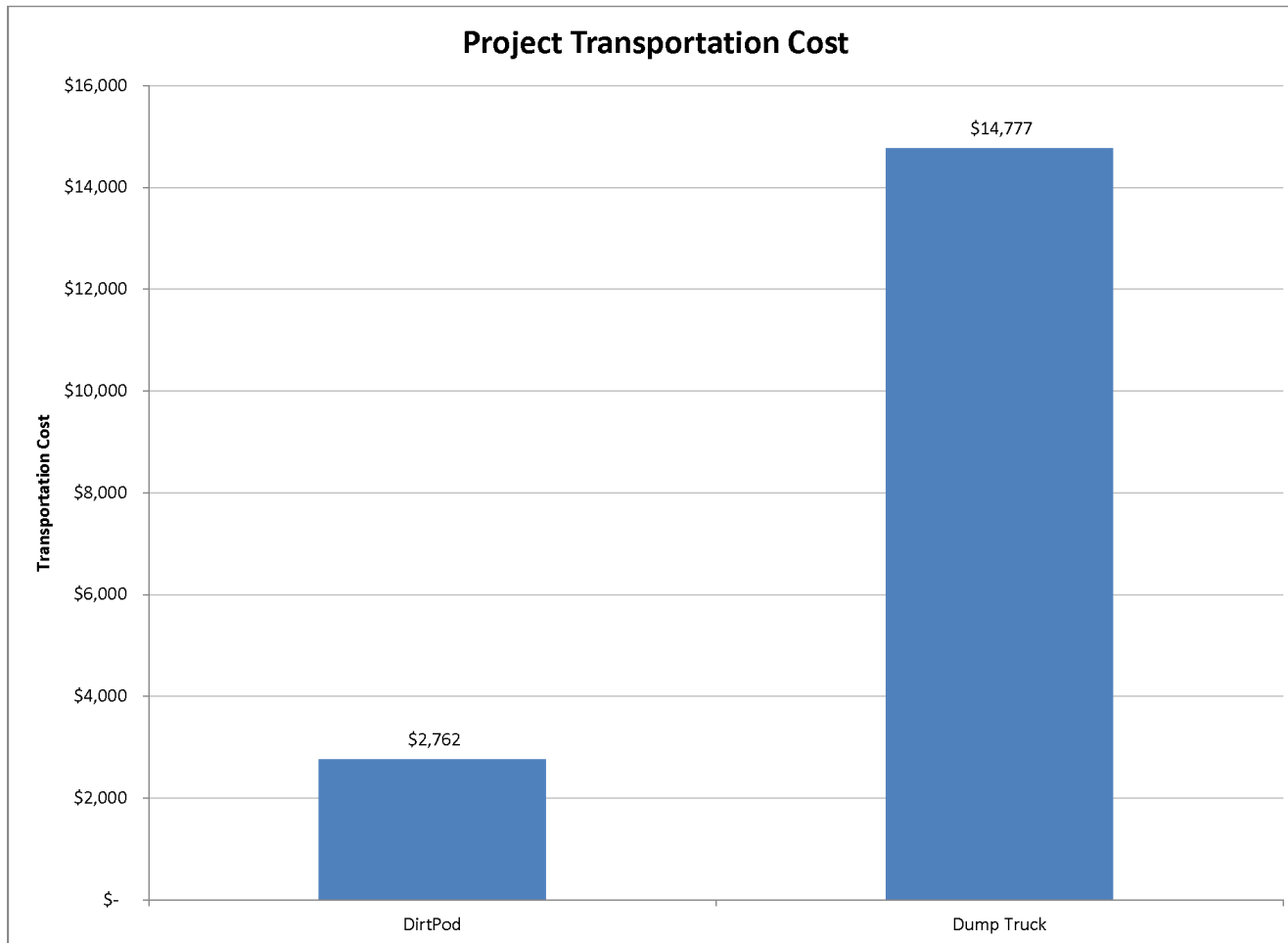
Example Project: Comparison



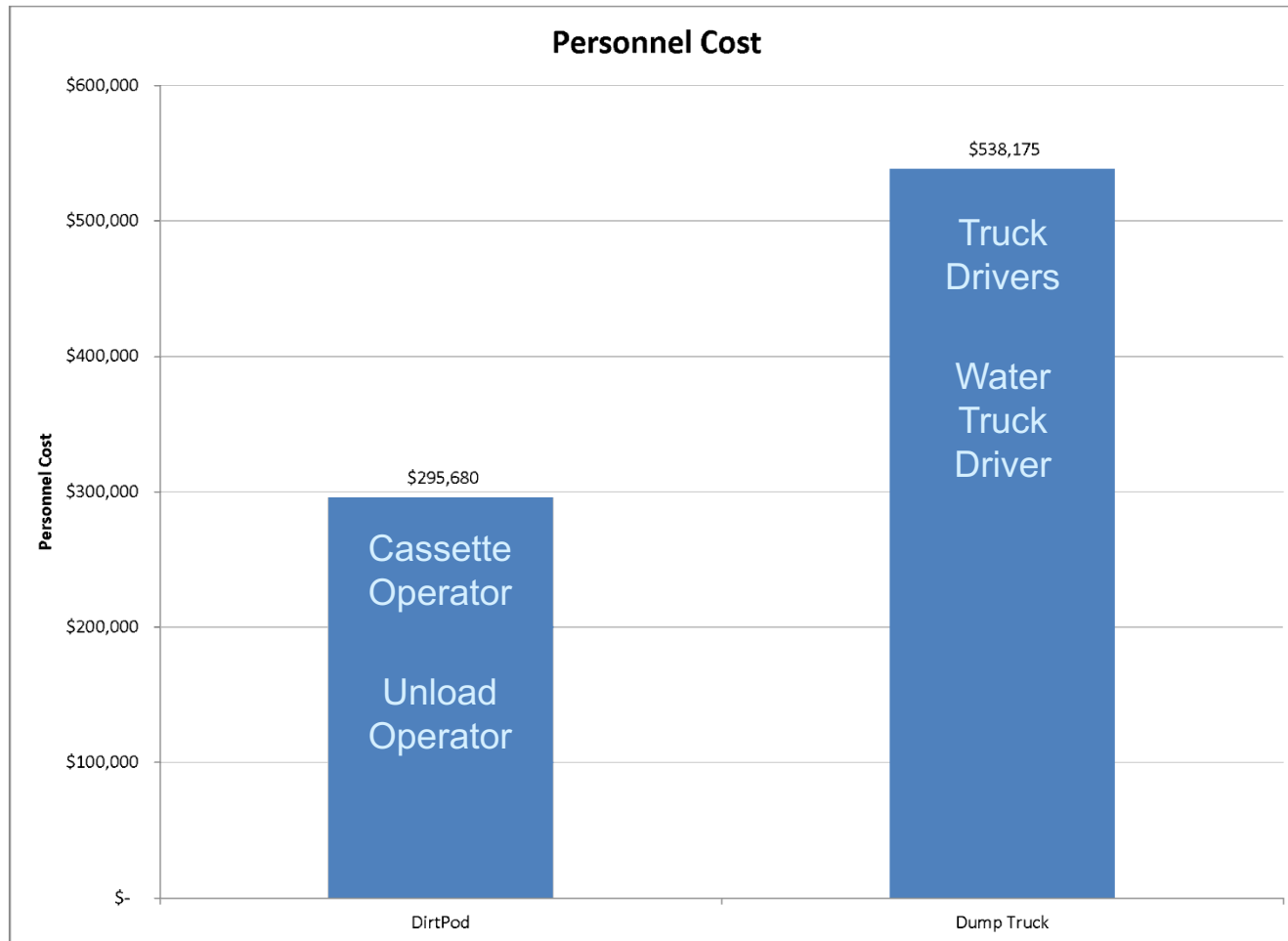
Example Project: Comparison



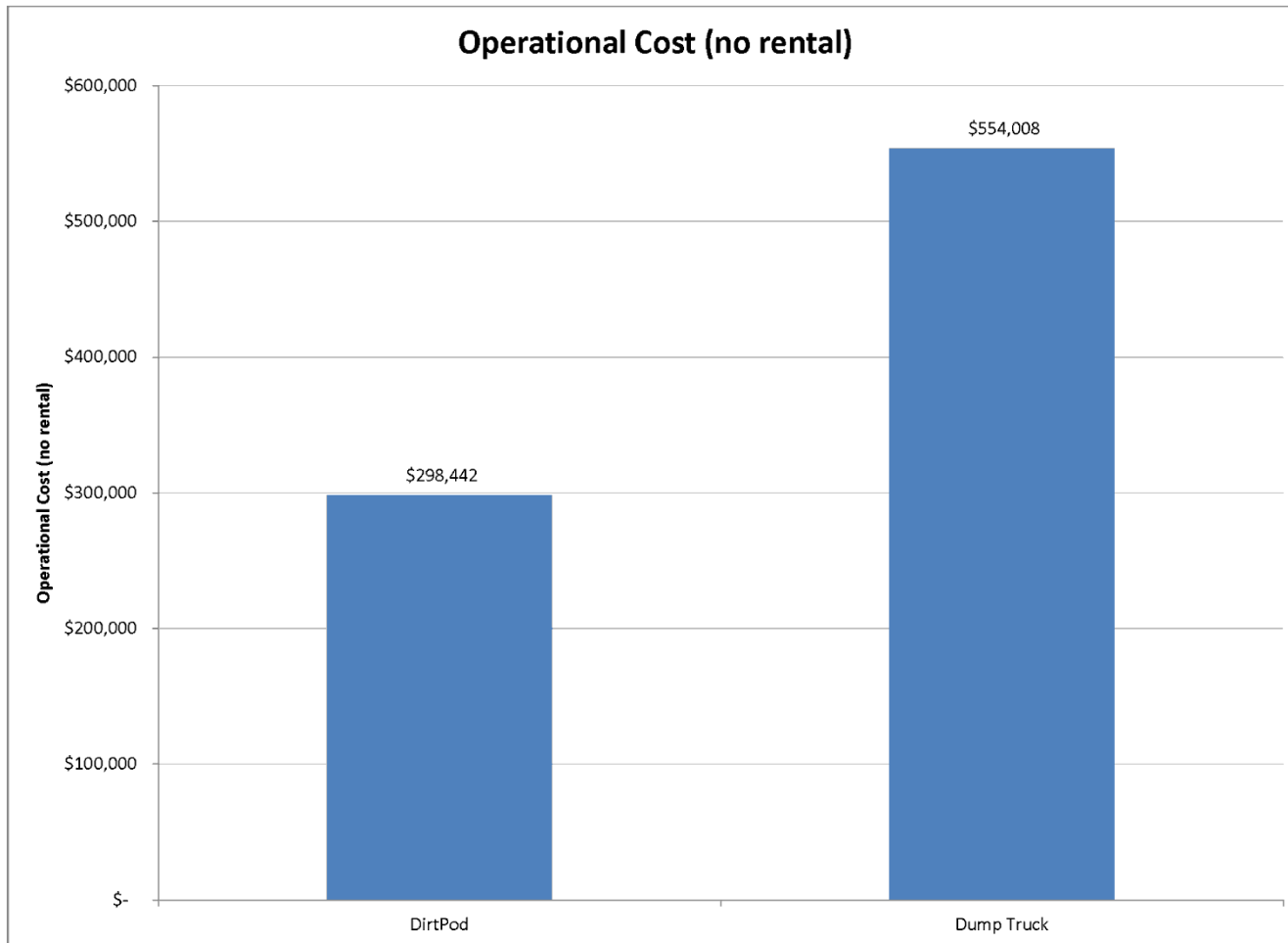
Example Project: Comparison



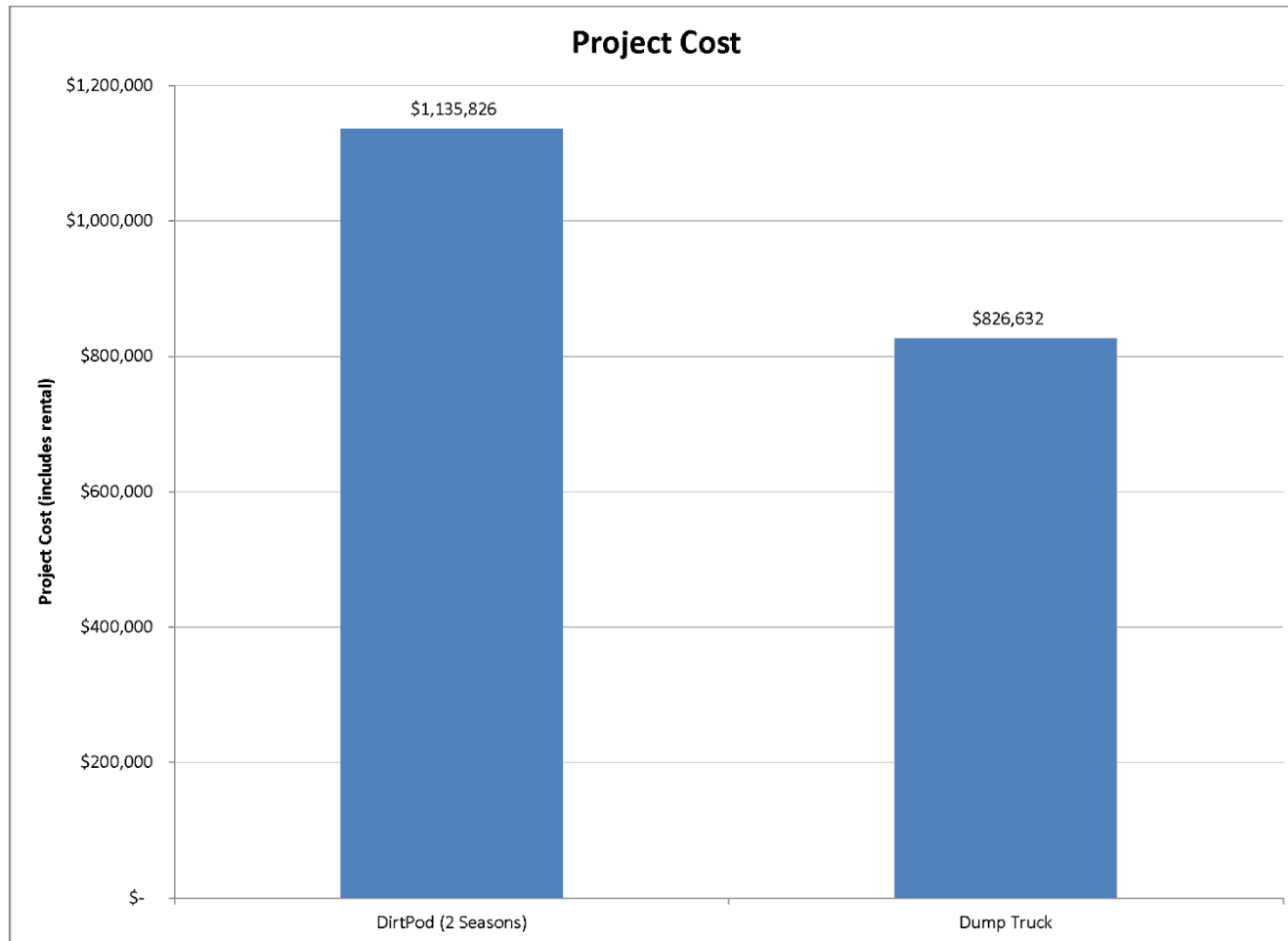
Example Project: Comparison



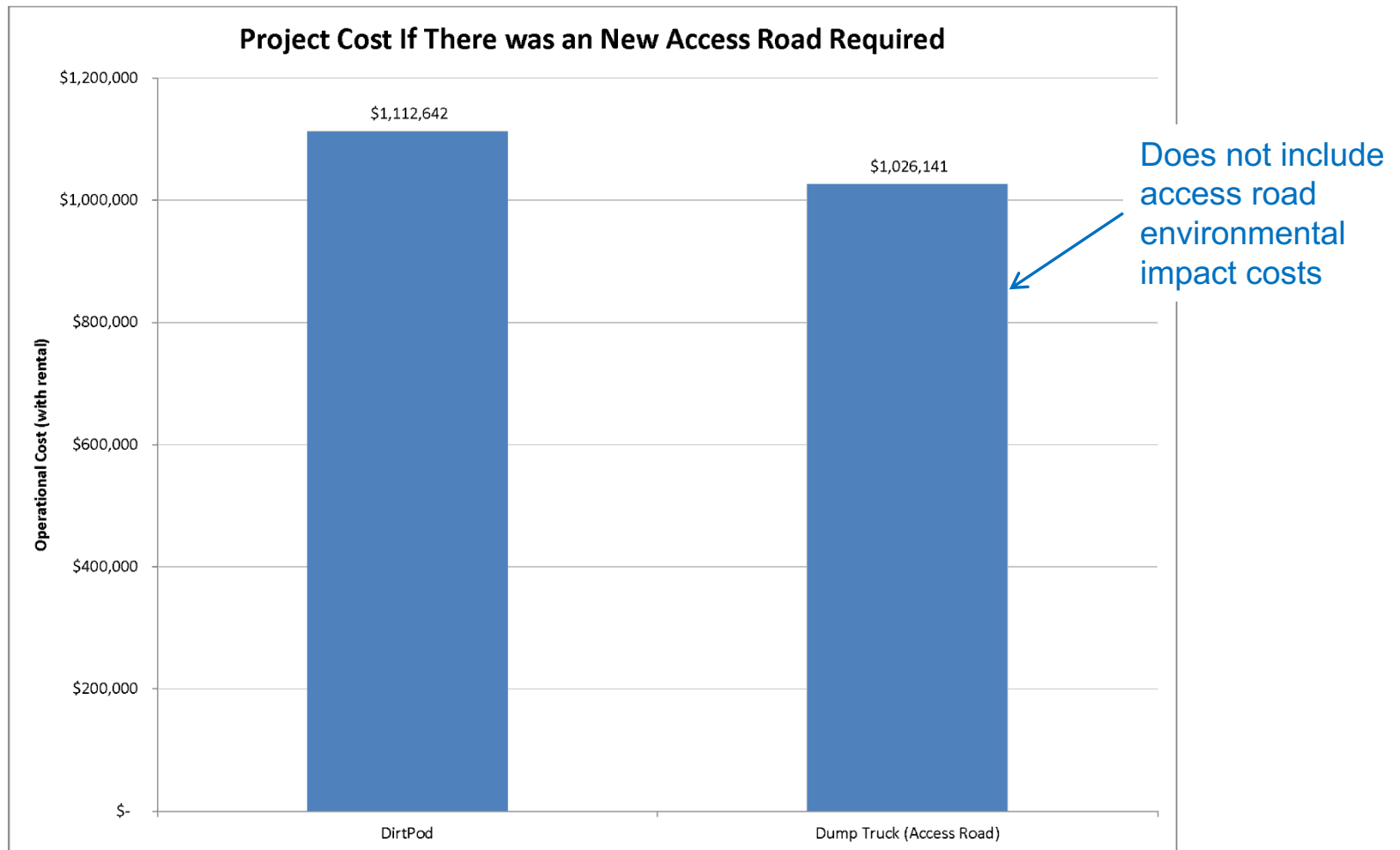
Example Project: Comparison



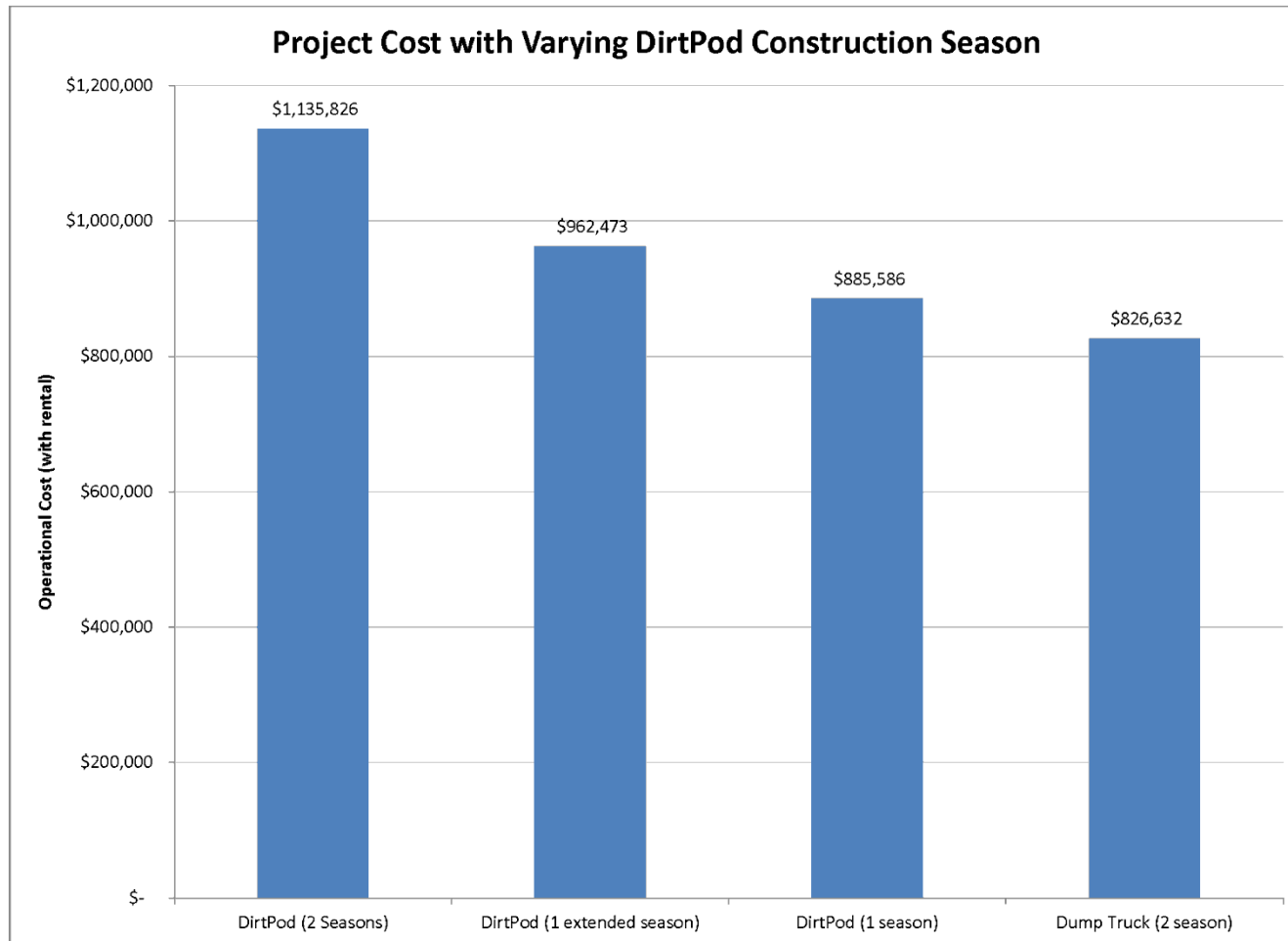
Example Project: Comparison



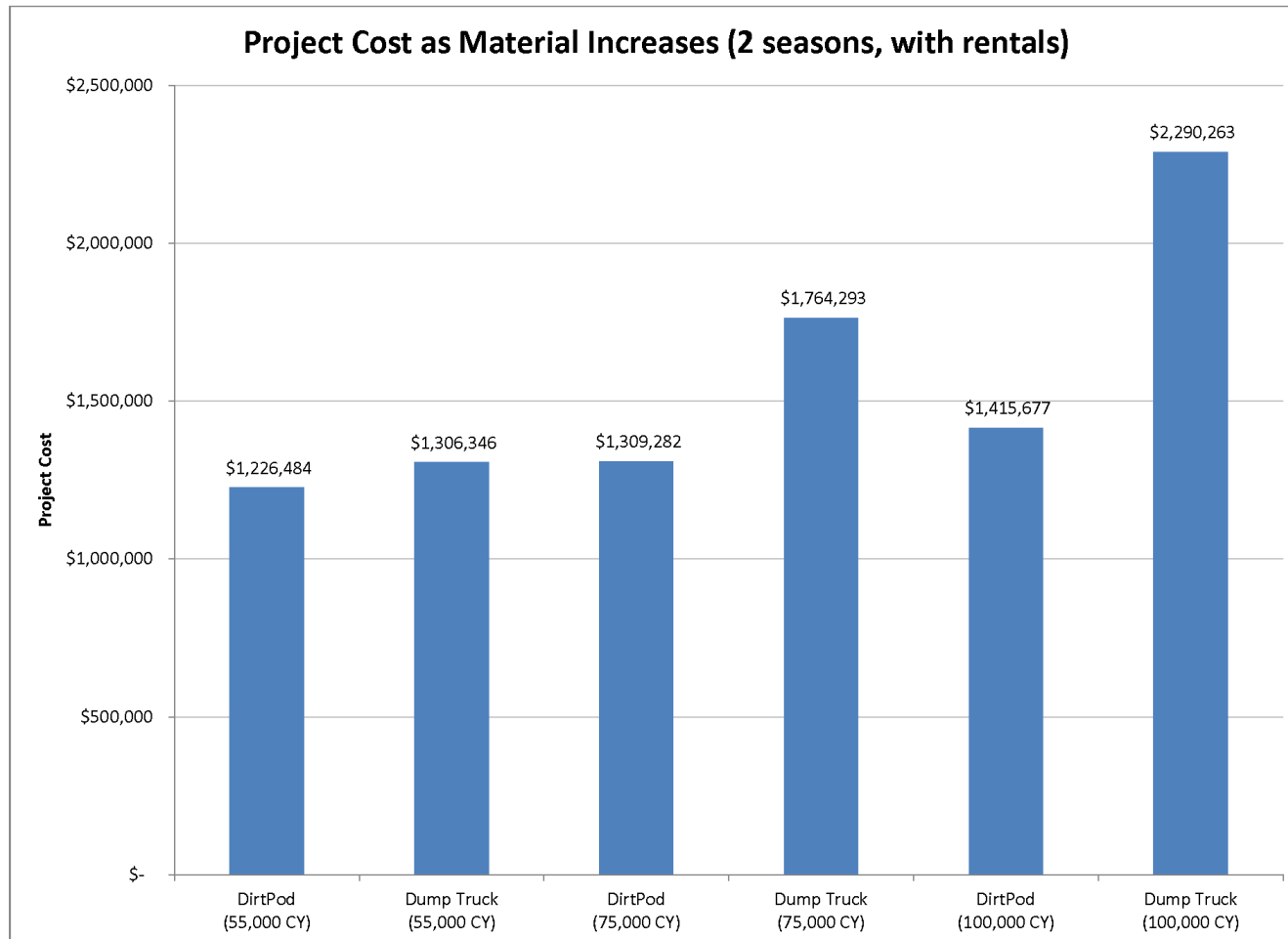
Example Project: Comparison



Example Project: Comparison



Example Project: Comparison



Conclusions

Conclusions

Several problems

Several solutions

When the conditions are right,
DirtPods can deliver

Think outside the box

Questions?