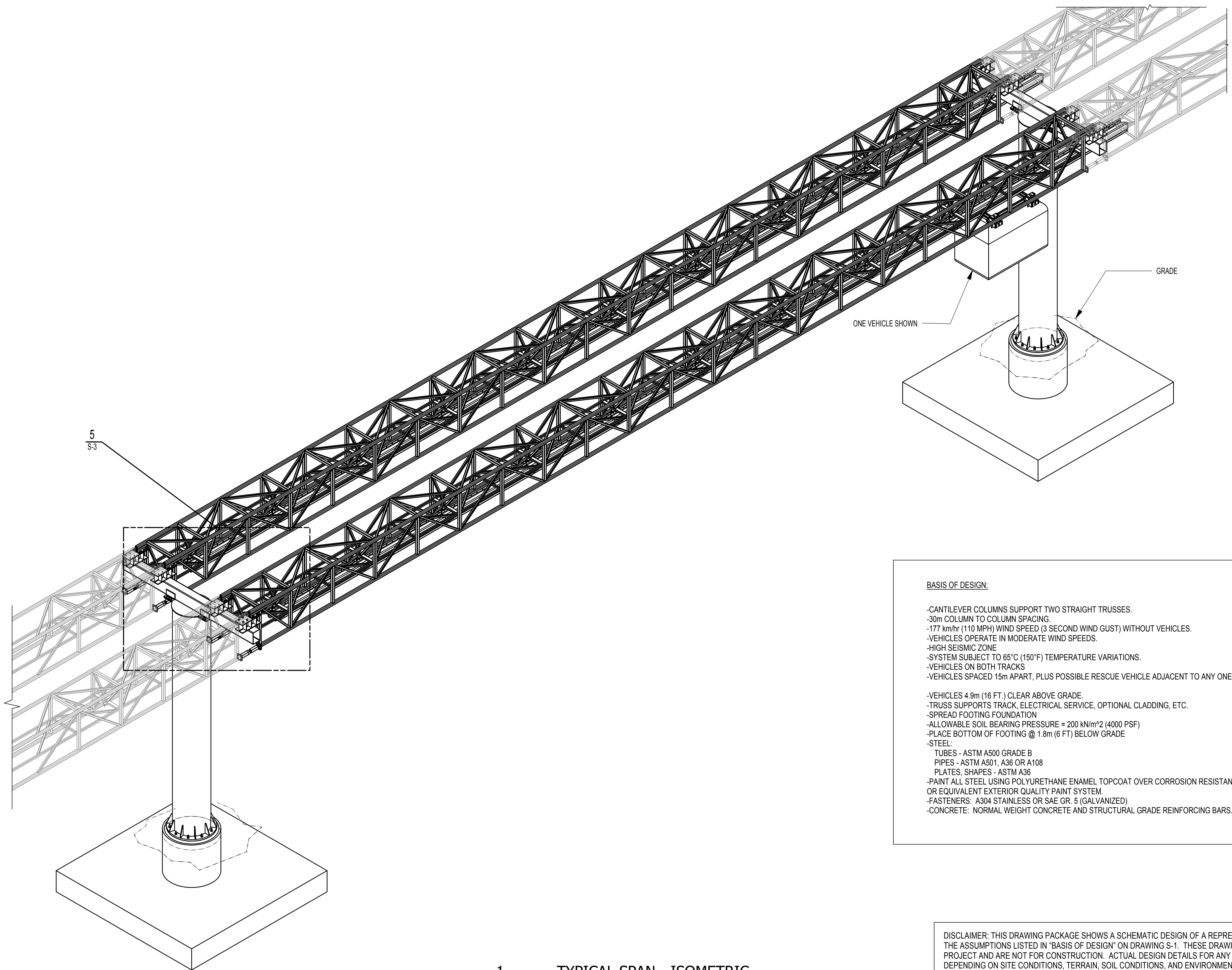


3  
2  
1  
0  
0.5  
1



**BASIS OF DESIGN:**

- CANTILEVER COLUMNS SUPPORT TWO STRAIGHT TRUSSES.
- 30m COLUMN TO COLUMN SPACING.
- 177 km/hr (110 MPH) WIND SPEED (3 SECOND WIND GUST) WITHOUT VEHICLES.
- VEHICLES OPERATE IN MODERATE WIND SPEEDS.
- HIGH SEISMIC ZONE
- SYSTEM SUBJECT TO 65°C (150°F) TEMPERATURE VARIATIONS.
- VEHICLES ON BOTH TRACKS
- VEHICLES SPACED 15m APART, PLUS POSSIBLE RESCUE VEHICLE ADJACENT TO ANY ONE VEHICLE.
- VEHICLES 4.9m (16 FT.) CLEAR ABOVE GRADE.
- TRUSS SUPPORTS TRACK, ELECTRICAL SERVICE, OPTIONAL CLADDING, ETC.
- SPREAD FOOTING FOUNDATION
- ALLOWABLE SOIL BEARING PRESSURE = 200 kN/m<sup>2</sup> (4000 PSF)
- PLACE BOTTOM OF FOOTING @ 1.8m (6 FT) BELOW GRADE
- STEEL:
  - TUBES - ASTM A500 GRADE B
  - PIPES - ASTM A501, A36 OR A108
  - PLATES, SHAPES - ASTM A36
- PAINT ALL STEEL USING POLYURETHANE ENAMEL TOPCOAT OVER CORROSION RESISTANT PRIMER, OR EQUIVALENT EXTERIOR QUALITY PAINT SYSTEM.
- FASTENERS: A304 STAINLESS OR SAE GR. 5 (GALVANIZED)
- CONCRETE: NORMAL WEIGHT CONCRETE AND STRUCTURAL GRADE REINFORCING BARS.

DISCLAIMER: THIS DRAWING PACKAGE SHOWS A SCHEMATIC DESIGN OF A REPRESENTATIVE JPODS SYSTEM, BASED ON THE ASSUMPTIONS LISTED IN "BASIS OF DESIGN" ON DRAWING S-1. THESE DRAWINGS ARE NOT FOR ANY SPECIFIC PROJECT AND ARE NOT FOR CONSTRUCTION. ACTUAL DESIGN DETAILS FOR ANY PARTICULAR SITE WILL VARY DEPENDING ON SITE CONDITIONS, TERRAIN, SOIL CONDITIONS, AND ENVIRONMENTAL CONDITIONS. THE CURRENT SCHEMATIC DESIGN IS BASED ON SCHEMATIC LEVEL ENGINEERING CALCULATIONS; HOWEVER, ALL DETAILS ARE SUBJECT TO CHANGE AS THE DESIGN IS DEVELOPED FURTHER.

**1** TYPICAL SPAN - ISOMETRIC  
S-1 SCALE 1:50

REV	DATE	DESCRIPTION	BY
0			

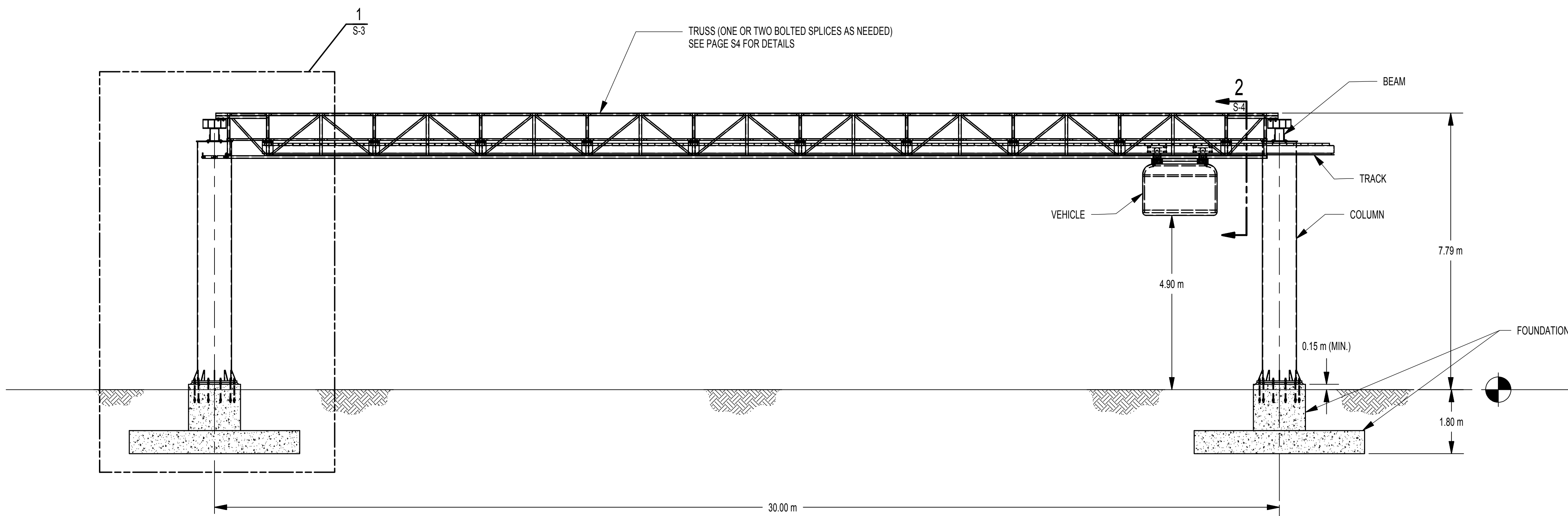
**McLaren**  
ENGINEERING GROUP

M. G. McLAREN, P.C.  
100 Snake Hill Road, West Nyack, NY 10994  
Tel. (845) 353-6400 Fax. (845) 353-6509  
www.mclaren.com

PROJECT  
**JPODS  
CANTILEVER COLUMN  
PAIR OF STRAIGHT TRACKS**

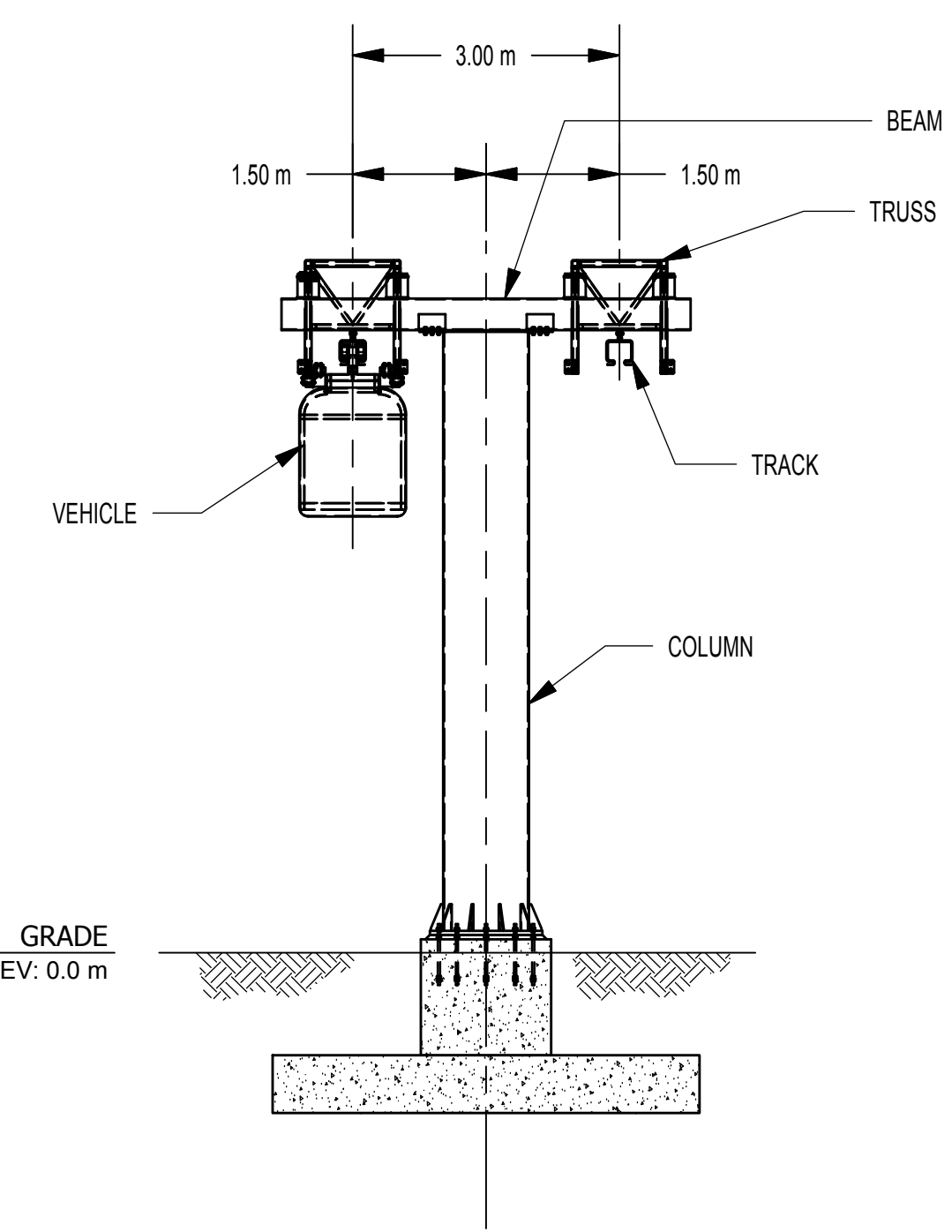
SHEET TITLE  
**ISOMETRIC**

PROJECT NO.	109393
SCALE	AS NOTED
DATE	2/2/10
DRAWN BY	MG
CHECKED BY	WBG
DRAWING NO.	S-1

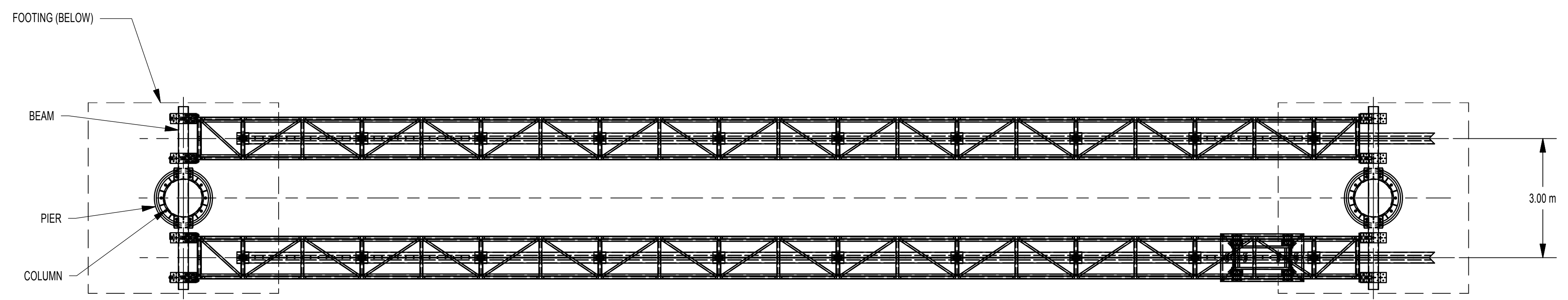


**1 SIDE ELEVATION**  
S-2 SCALE 1:75

NOTE:  
BRACKETS SUPPORTING CONDUITS, SERVICE  
EQUIPMENT, MAINTENANCE ACCESS FEATURES  
OR OPTIONAL CLADDING ARE NOT SHOWN.



**2 END VIEW**  
S-2 SCALE 1:75



**3 PLAN**  
S-2 SCALE 1:75

DISCLAIMER: THIS DRAWING PACKAGE SHOWS A SCHEMATIC DESIGN OF A REPRESENTATIVE JPODS SYSTEM, BASED ON THE ASSUMPTIONS LISTED IN "BASIS OF DESIGN" ON DRAWING S-1. THESE DRAWINGS ARE NOT FOR ANY SPECIFIC PROJECT AND ARE NOT FOR CONSTRUCTION. ACTUAL DESIGN DETAILS FOR ANY PARTICULAR SITE WILL VARY DEPENDING ON SITE CONDITIONS, TERRAIN, SOIL CONDITIONS, AND ENVIRONMENTAL CONDITIONS. THE CURRENT SCHEMATIC DESIGN IS BASED ON SCHEMATIC LEVEL ENGINEERING CALCULATIONS; HOWEVER, ALL DETAILS ARE SUBJECT TO CHANGE AS THE DESIGN IS DEVELOPED FURTHER.

REV	DATE	DESCRIPTION	BY
0			

**McLaren**  
ENGINEERING GROUP

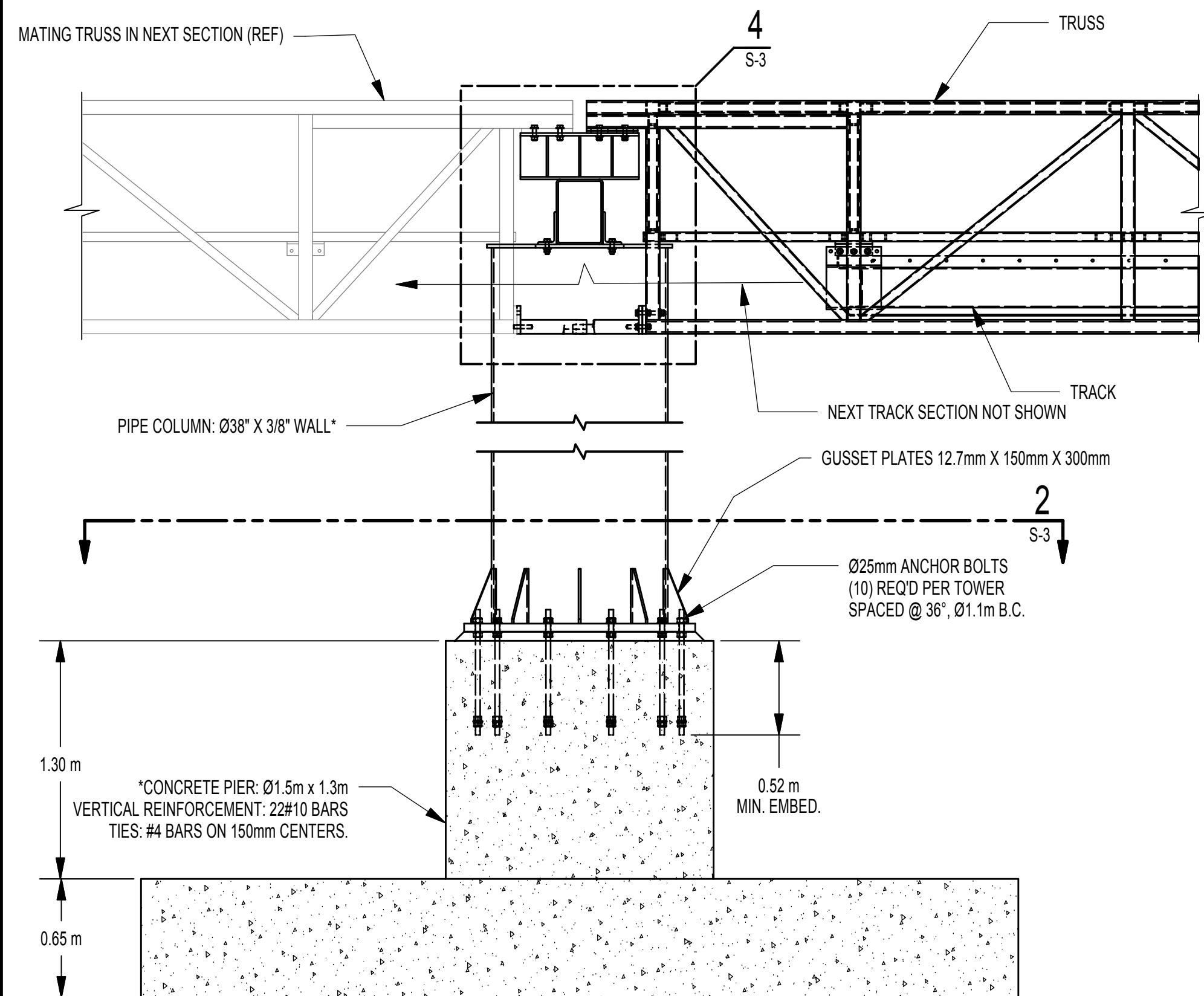
M. G. McLAREN, P.C.  
100 Snake Hill Road, West Nyack, NY 10994  
Tel. (845) 353-6400 Fax. (845) 353-6509  
www.mclaren.com

PROJECT  
**JPODS  
CANTILEVER COLUMN  
PAIR OF STRAIGHT TRACKS**

SHEET TITLE  
**OVERVIEWS**

PROJECT NO.	109393
SCALE	AS NOTED
DATE	2/2/10
DRAWN BY	MG
CHECKED BY	WBG

DRAWING NO.  
**S-2**  
2 OF 4 SHTS



**1 ELEVATION COLUMN & FOUNDATION**  
S-3 SCALE 1:25

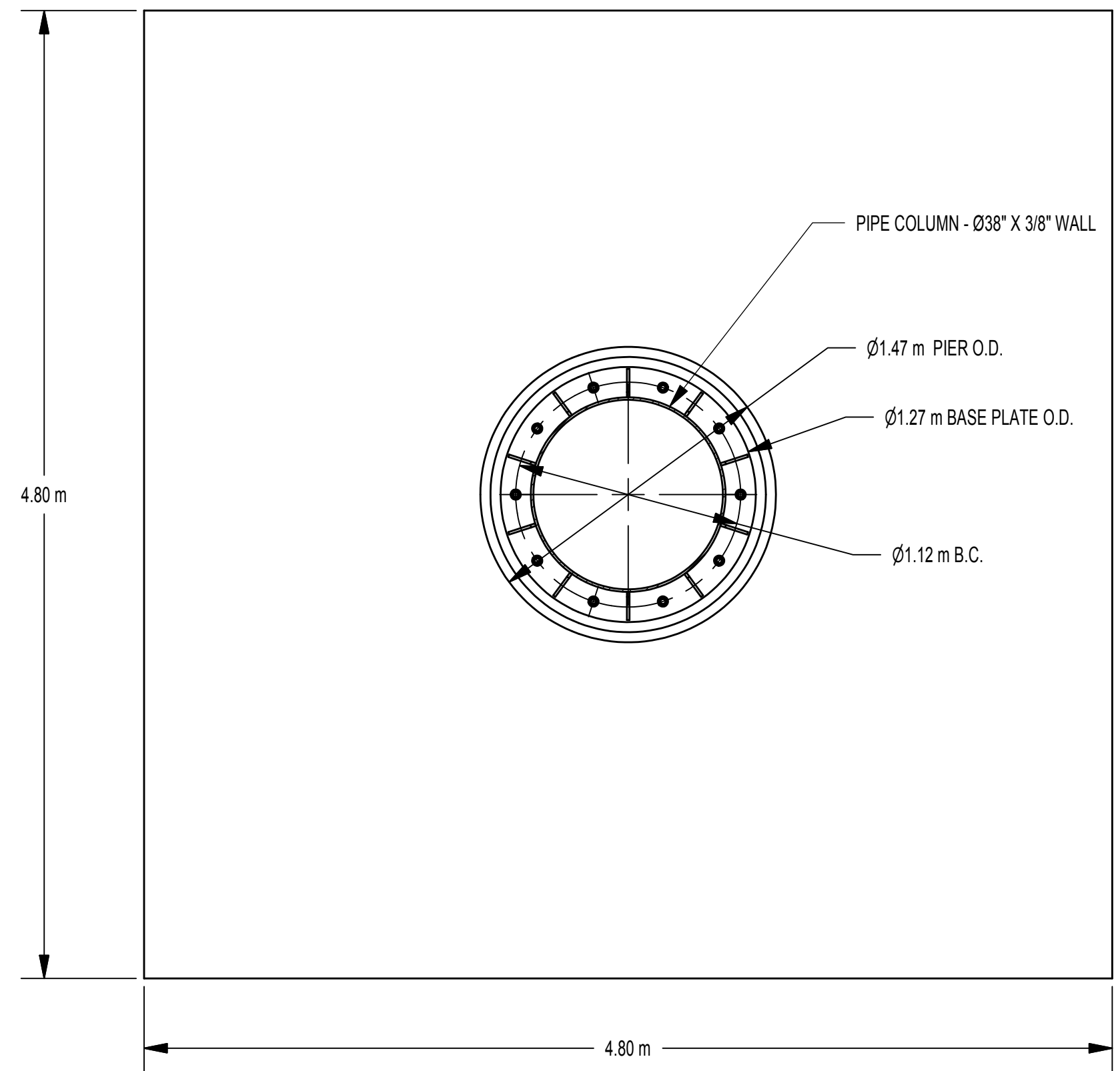
\*IF THE DESIGN BASIS IS FOR 144 km/hr (90 MPH) WIND, THEN THE FOLLOWING ELEMENTS CAN BE USED:

COLUMN: Ø32" PIPE X 3/8" WALL

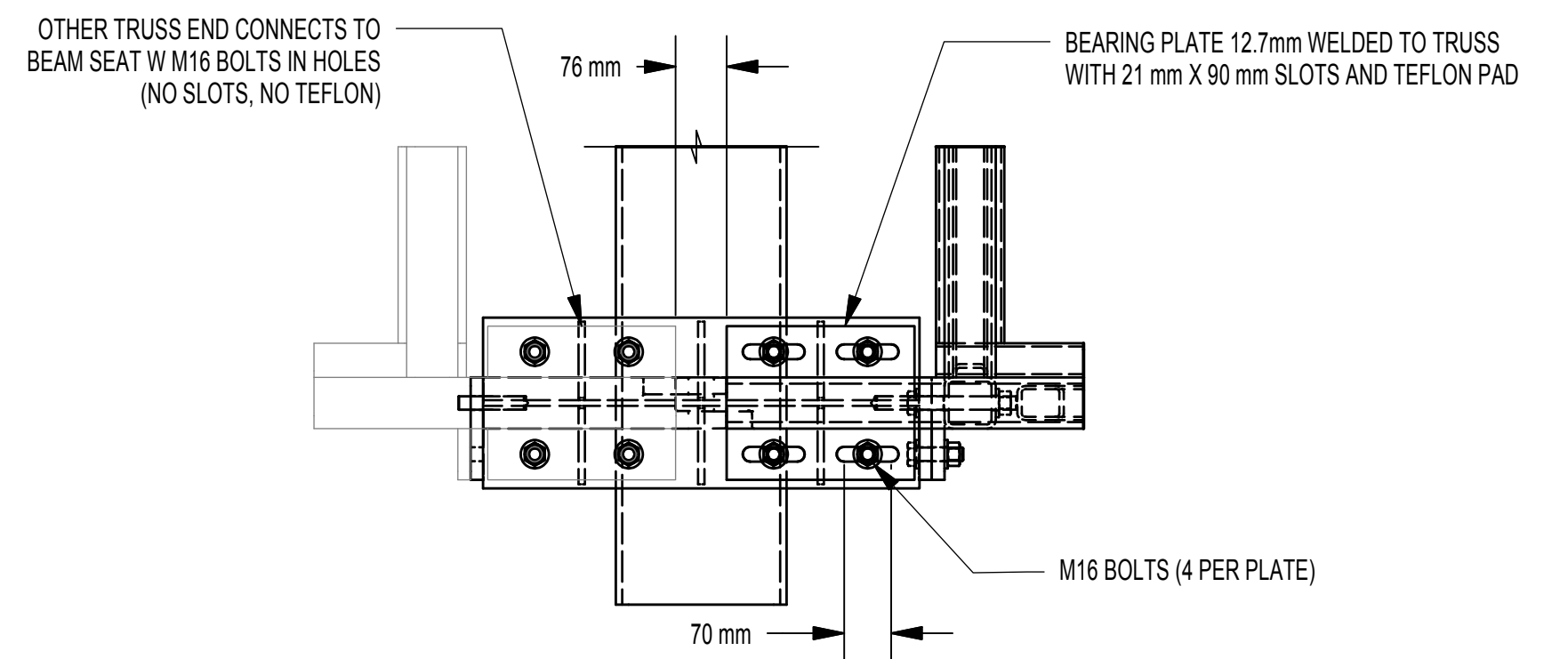
PIER: Ø1.3m x 1.2m  
VERTICAL REINFORCEMENT: 18 #10 BARS  
TIES: #4 BARS @ 150mm CENTERS

FOOTING: 4.25m x 4.25m x 0.6m. BOTTOM OF FOOTING @ 1.8m BELOW GRADE  
TOP REINFORCEMENT: 14 #5 BARS EACH WAY  
BOTTOM REINFORCEMENT: 14 #8 BARS EACH WAY

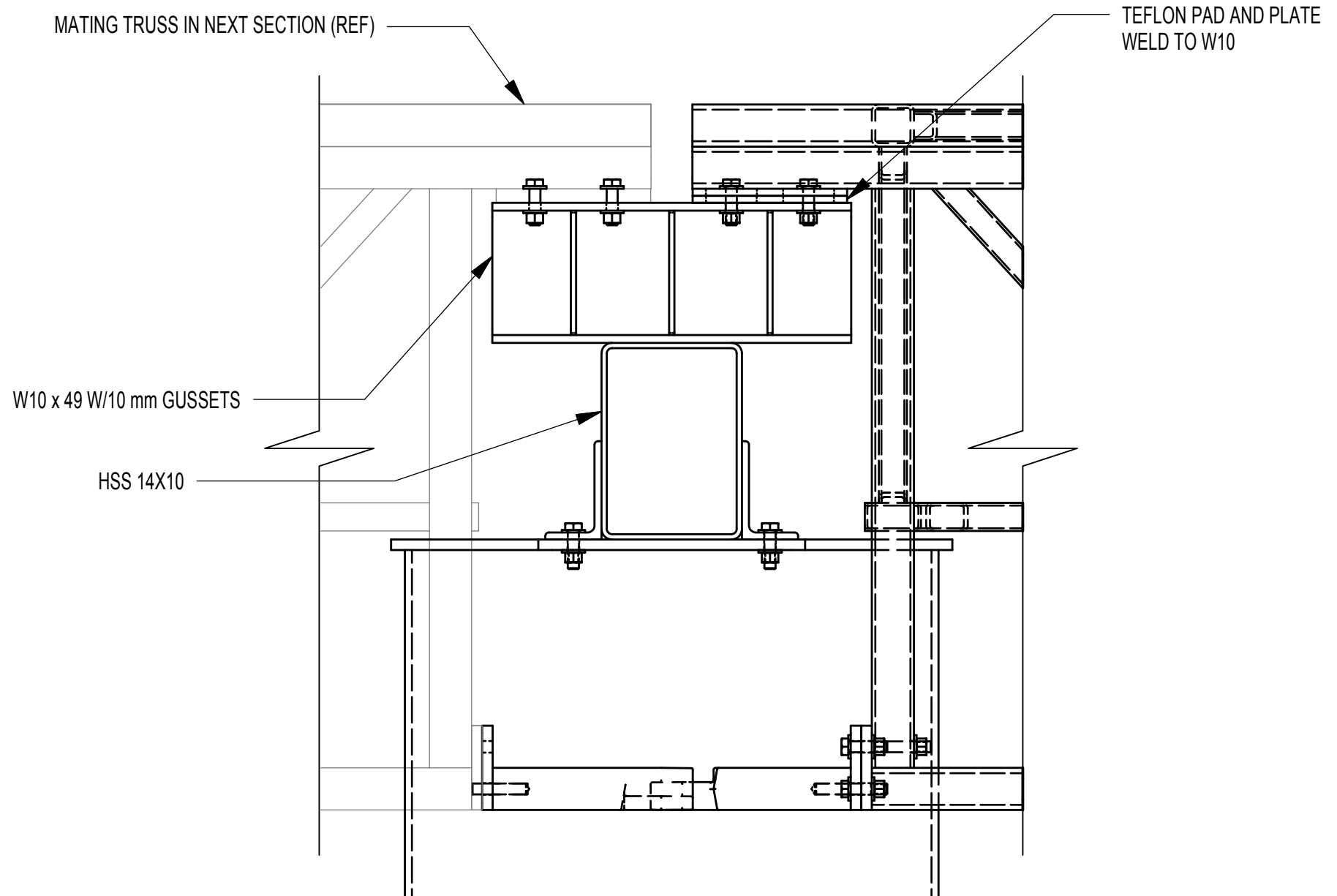
\* CONCRETE FOOTING 4.8m x 4.8m x 0.7m  
BOTTOM OF FOOTING 1.8m BELOW GRADE MIN.  
BOTTOM REINFORCING: 14 #9 BARS EACH WAY  
TOP REINFORCING: 14 #5 BARS EACH WAY



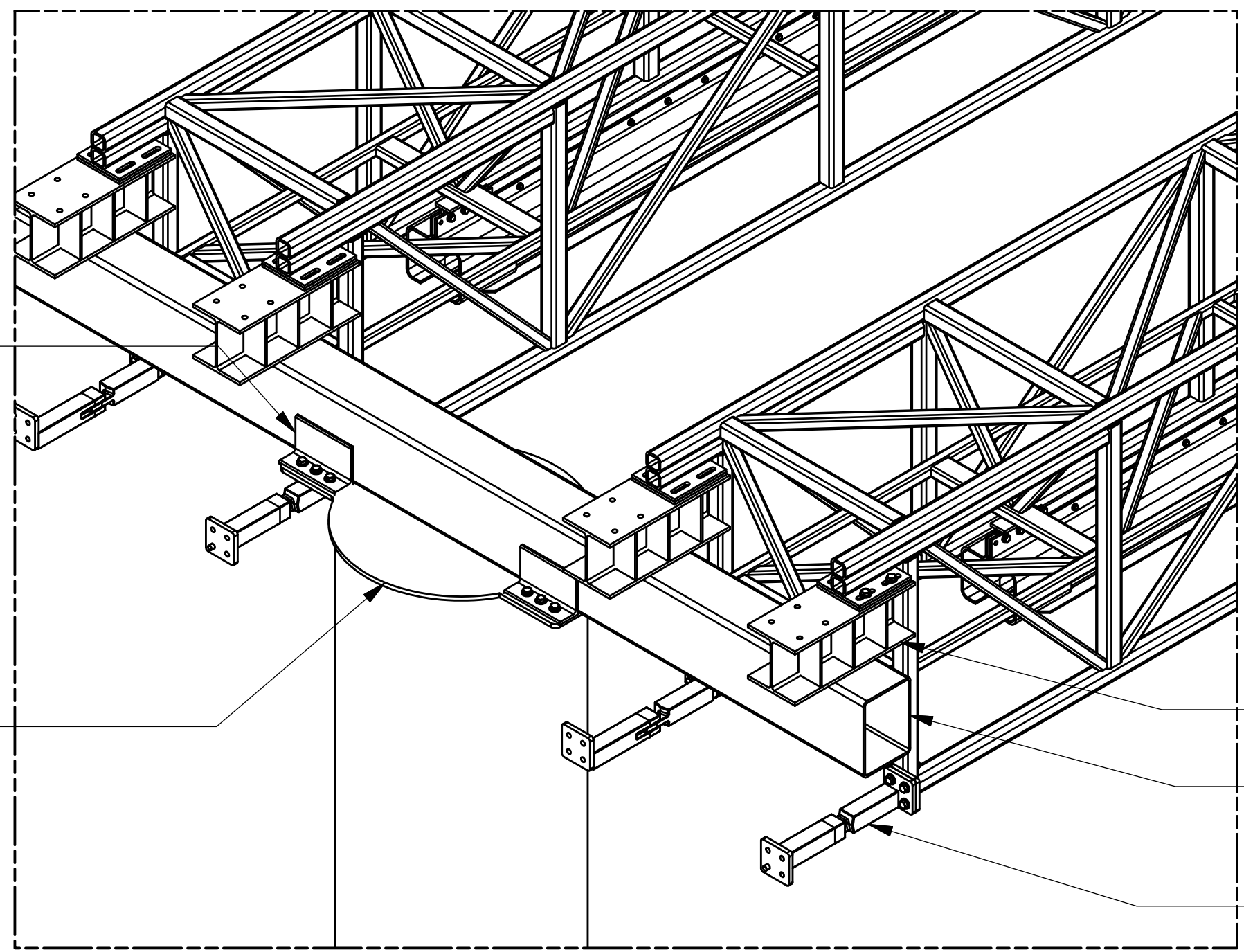
**2 PLAN SECTION COLUMN AND FOUNDATION**  
S-3 SCALE 1:25



**3 PLAN DETAIL TRUSS MOUNT**  
S-3 SCALE 1:10



**4 DETAIL TRUSS MOUNT**  
S-3 SCALE 1:10



NOTES:  
- CAP OPEN ENDS OF ALL TUBES U.O.N.  
- MATING TRUSSES AND TRACKS OMITTED FOR CLARITY

**5 DETAIL TRUSS CONNECTION ISO**  
S-3 SCALE 1:20

DISCLAIMER: THIS DRAWING PACKAGE SHOWS A SCHEMATIC DESIGN OF A REPRESENTATIVE JPODS SYSTEM, BASED ON THE ASSUMPTIONS LISTED IN 'BASIS OF DESIGN' ON DRAWING S-1. THESE DRAWINGS ARE NOT FOR ANY SPECIFIC PROJECT AND ARE NOT FOR CONSTRUCTION. ACTUAL DESIGN DETAILS FOR ANY PARTICULAR SITE WILL VARY DEPENDING ON SITE CONDITIONS, TERRAIN, SOIL CONDITIONS, AND ENVIRONMENTAL CONDITIONS. THE CURRENT SCHEMATIC DESIGN IS BASED ON SCHEMATIC LEVEL ENGINEERING CALCULATIONS; HOWEVER, ALL DETAILS ARE SUBJECT TO CHANGE AS THE DESIGN IS DEVELOPED FURTHER.

REV	DATE	DESCRIPTION	BY
0			

**McLaren**  
ENGINEERING GROUP

M. G. McLAREN, P.C. West Nyack, NY 10994  
100 Snake Hill Road, West Nyack, NY 10994  
Tel. (845) 353-6400 Fax. (845) 353-6509  
www.mclaren.com

PROJECT  
**JPODS  
CANTILEVER COLUMN  
PAIR OF STRAIGHT TRACKS**

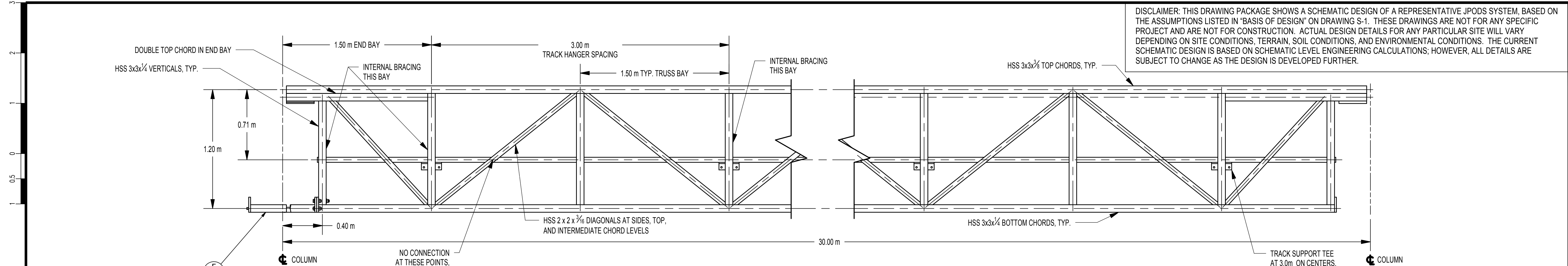
SHEET TITLE  
**TOWER DETAILS**

PROJECT NO.	109393
SCALE	AS NOTED
DATE	2/2/10
DRAWN BY	MG
CHECKED BY	WBG

DRAWING NO.  
**S-3**  
3 OF 4 SHTS

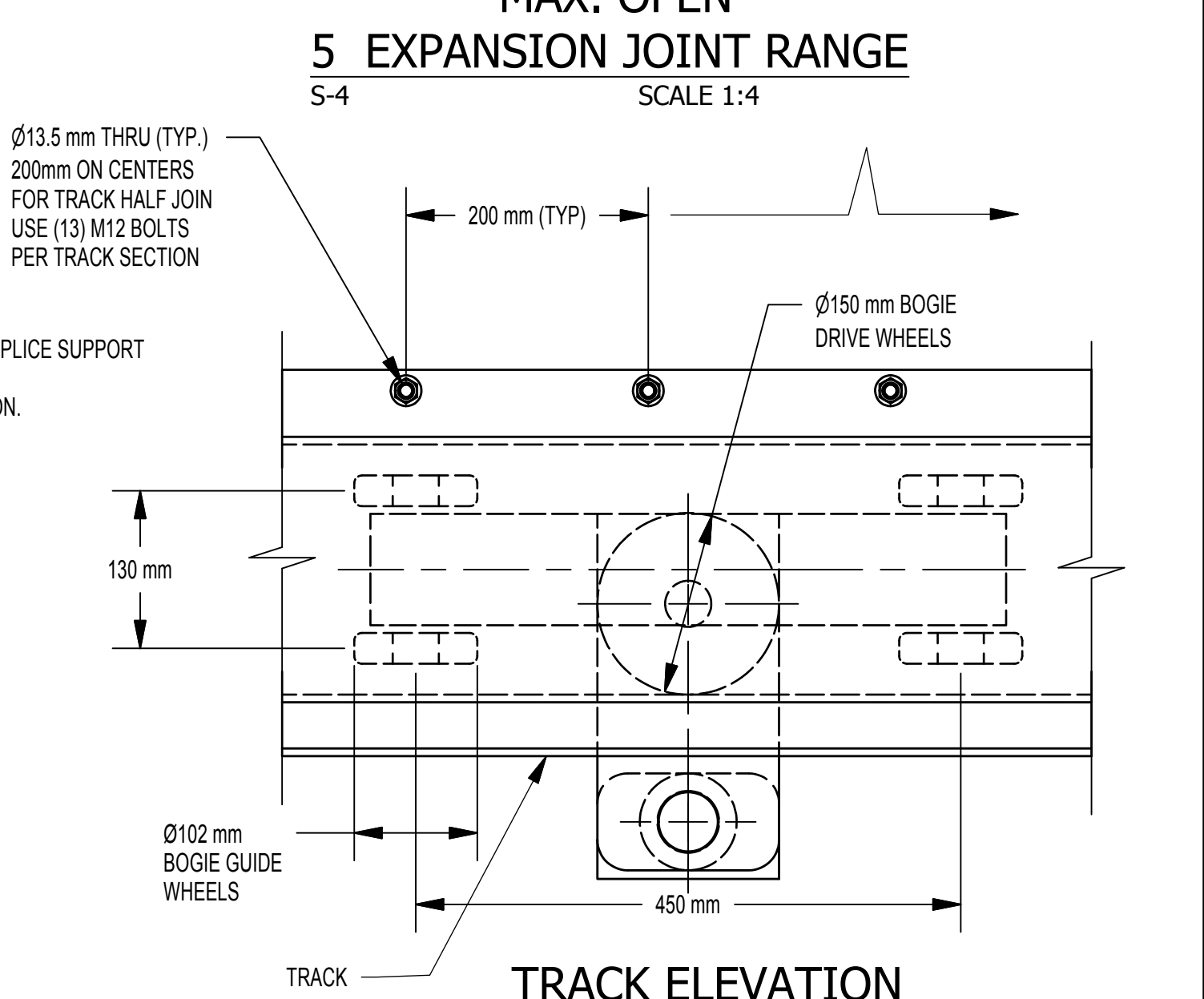
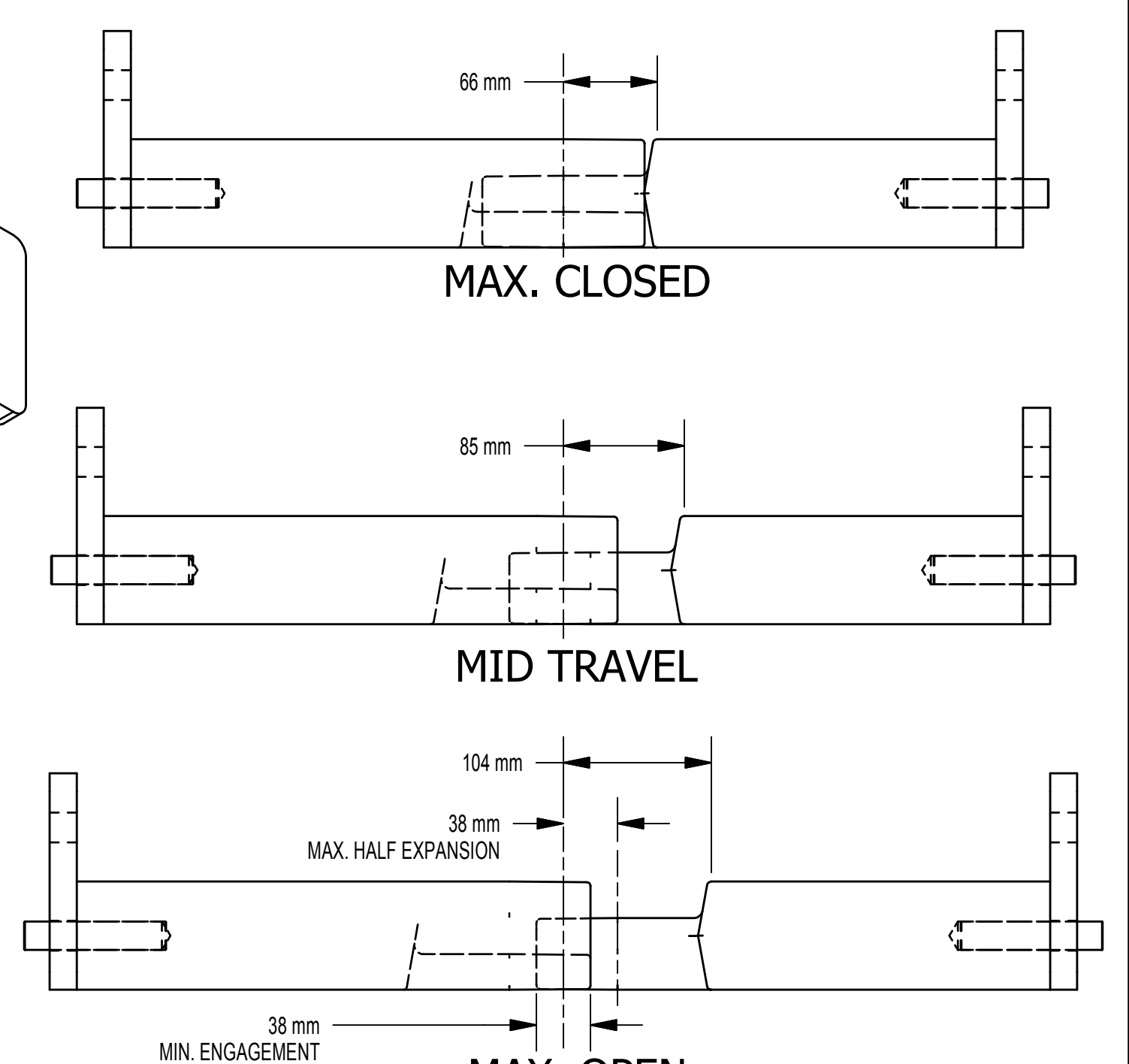
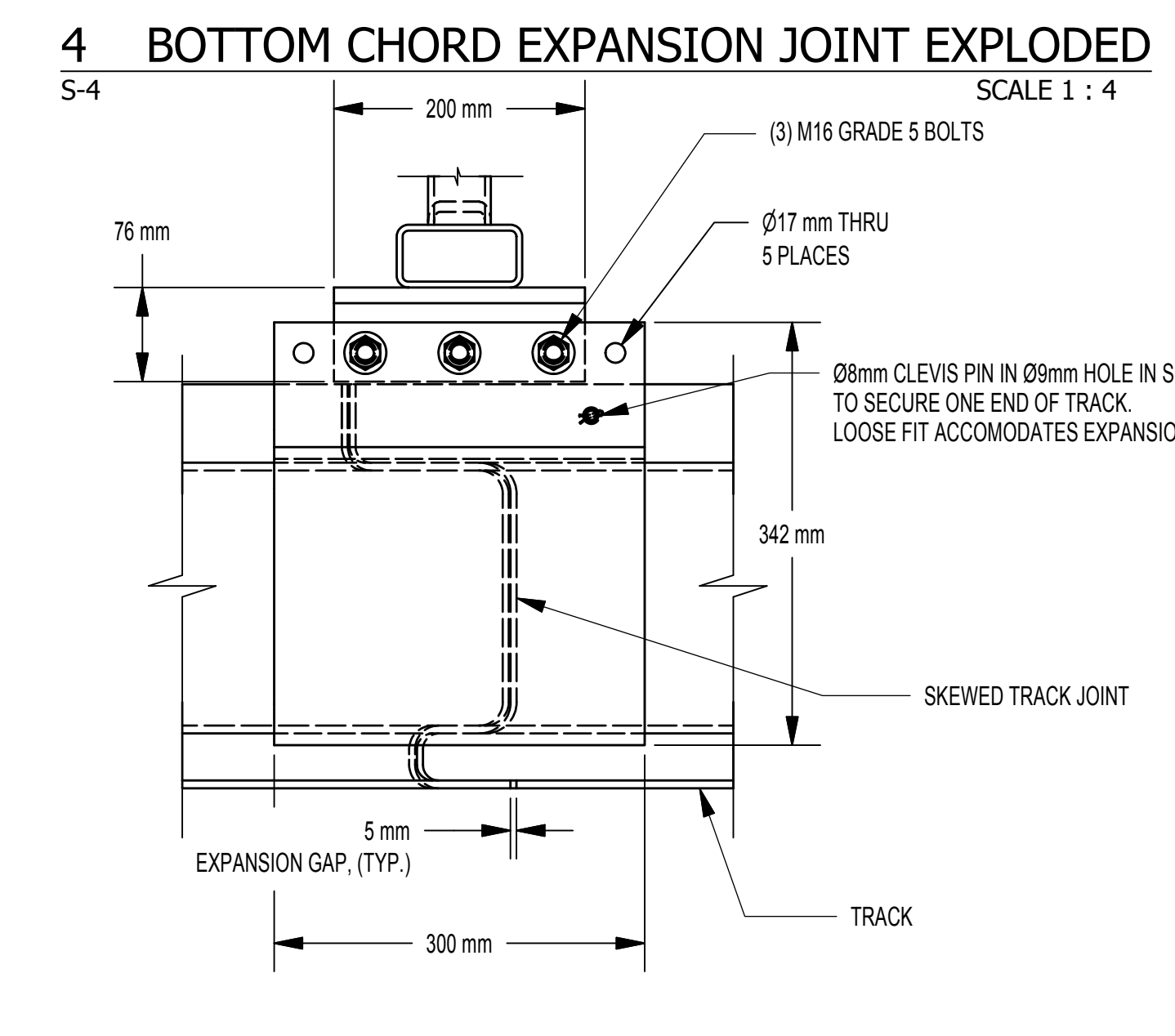
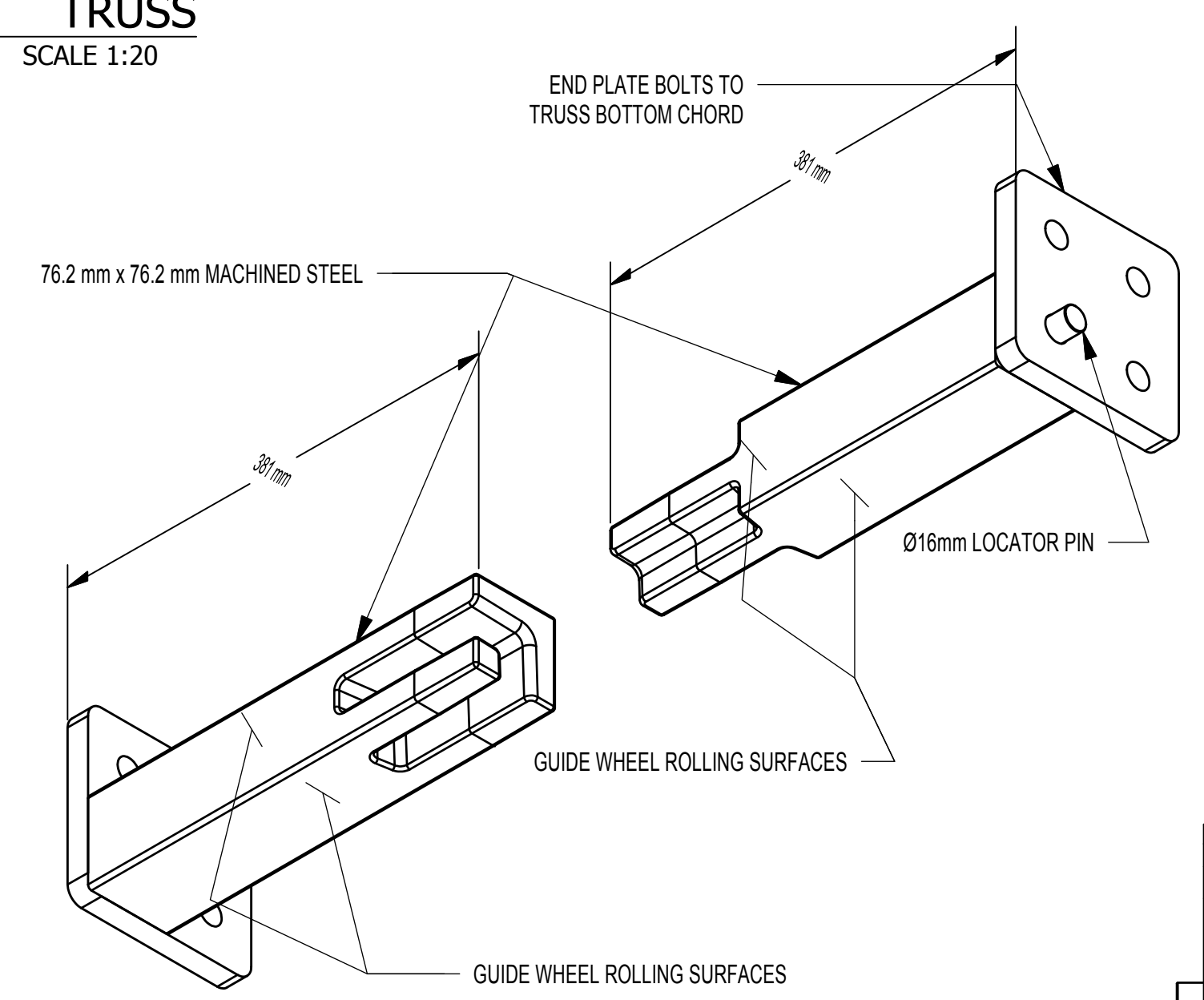
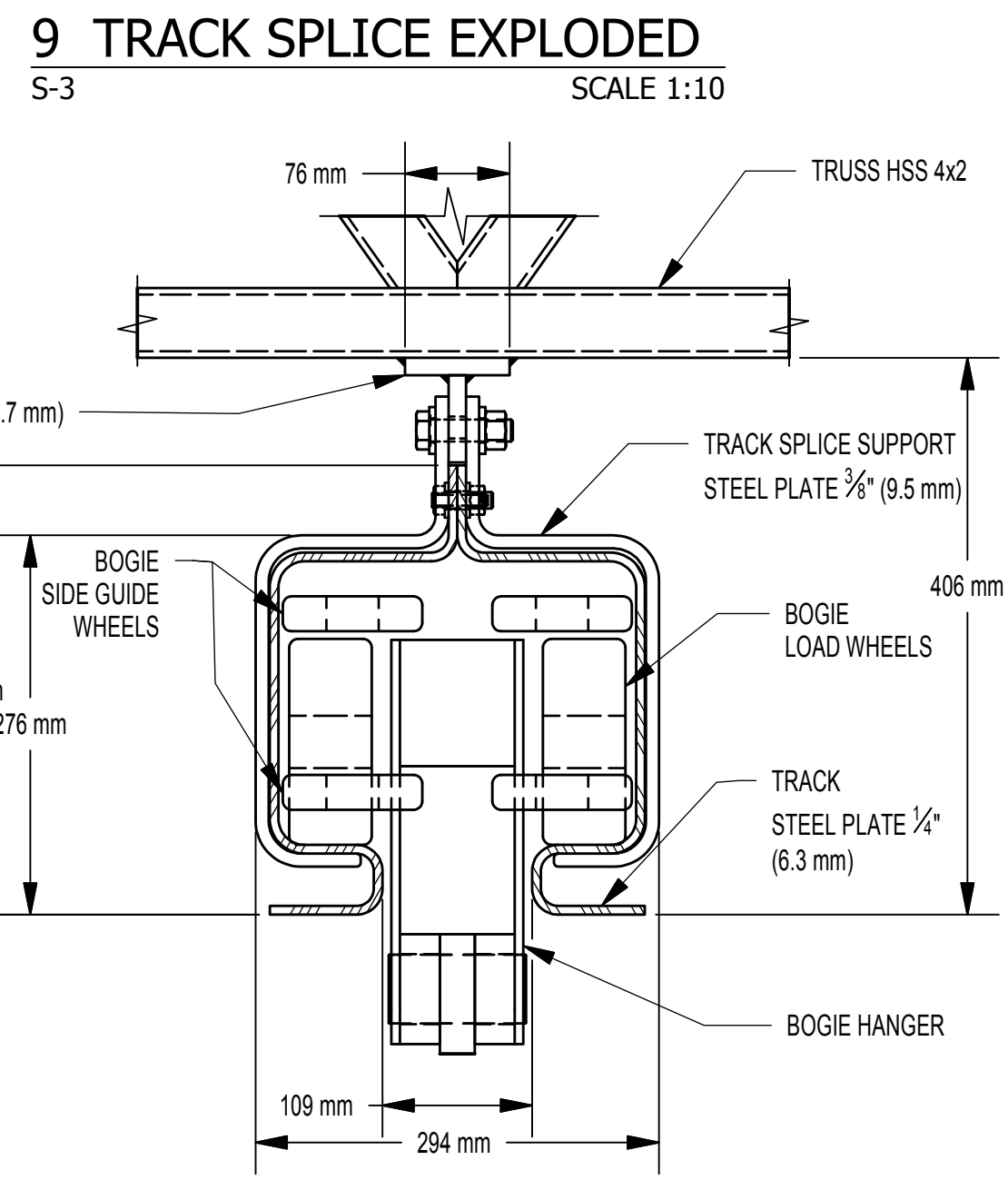
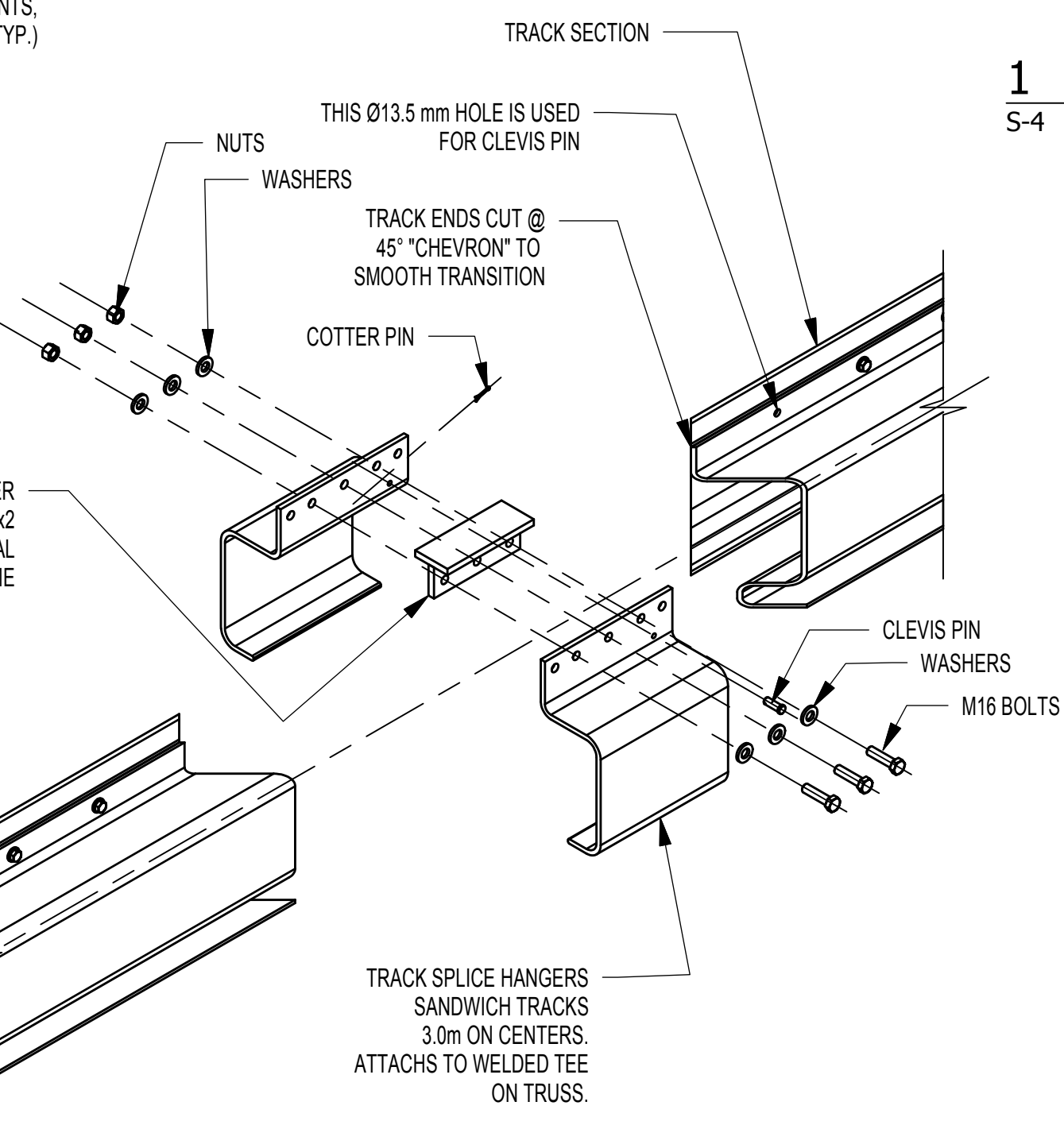
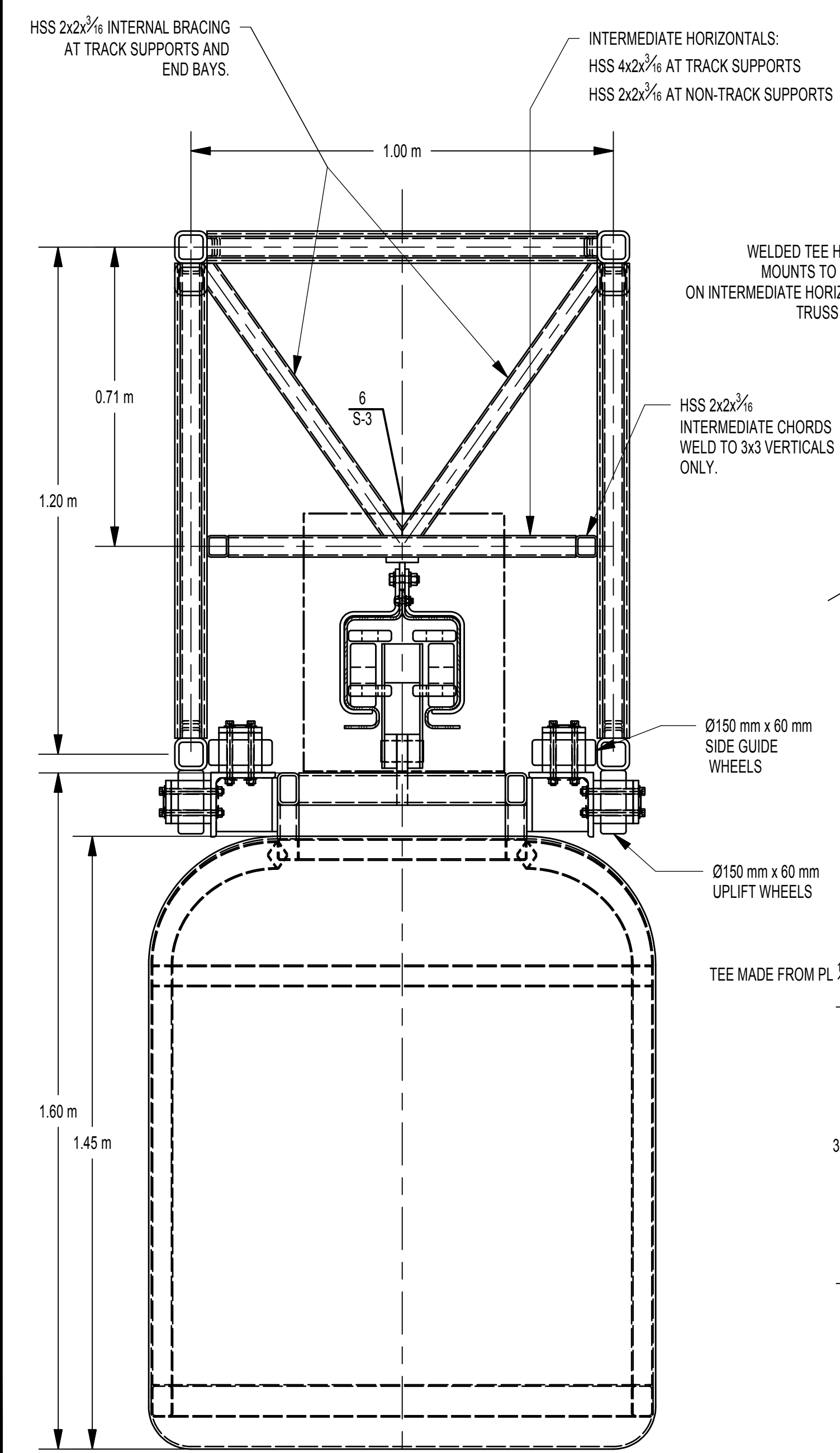


DISCLAIMER: THIS DRAWING PACKAGE SHOWS A SCHEMATIC DESIGN OF A REPRESENTATIVE JPODS SYSTEM, BASED ON THE ASSUMPTIONS LISTED IN "BASIS OF DESIGN" ON DRAWING S-1. THESE DRAWINGS ARE NOT FOR ANY SPECIFIC PROJECT AND ARE NOT FOR CONSTRUCTION. ACTUAL DESIGN DETAILS FOR ANY PARTICULAR SITE WILL VARY DEPENDING ON SITE CONDITIONS, TERRAIN, SOIL CONDITIONS, AND ENVIRONMENTAL CONDITIONS. THE CURRENT SCHEMATIC DESIGN IS BASED ON SCHEMATIC LEVEL ENGINEERING CALCULATIONS; HOWEVER, ALL DETAILS ARE SUBJECT TO CHANGE AS THE DESIGN IS DEVELOPED FURTHER.



5  
S-4

**1 TRUSS**  
S-4 SCALE 1:20



**2 SECTION TRACK**  
S-4 SCALE 1:10

<p><b>McLaren</b> ENGINEERING GROUP</p> <p>M. G. McLAREN, P.C. West Nyack, NY 10994 100 Snake Hill Road, West Nyack, NY 10994 Tel. (845) 353-6400 Fax. (845) 353-6509 www.mclareneng.com</p>	PROJECT	JPODS CANTILEVER COLUMN PAIR OF STRAIGHT TRACKS
	SHEET TITLE	TRACK AND TRUSS DETAILS
PROJECT NO.	109393	
SCALE	AS NOTED	
DATE	2/2/10	
DRAWN BY	MG	
CHECKED BY	WBG	
DRAWING NO.	S-4	
	4 OF 4	SHTS